

BIOCHEMISTRY

Assembly of the algal CO₂-fixing organelle, the pyrenoid, is guided by a Rubisco-binding motif

Moritz T. Meyer¹, Alan K. Itakura^{2,3}, Weronika Patena¹, Lianyong Wang¹, Shan He¹, Tom Emrich-Mills^{4*}, Chun S. Lau⁴, Gary Yates⁴, Luke C. M. Mackinder⁴, Martin C. Jonikas^{1†}

Approximately one-third of the Earth's photosynthetic CO₂ assimilation occurs in a pyrenoid, an organelle containing the CO₂-fixing enzyme Rubisco. How constituent proteins are recruited to the pyrenoid and how the organelle's subcompartments—membrane tubules, a surrounding phase-separated Rubisco matrix, and a peripheral starch sheath—are held together is unknown. Using the model alga *Chlamydomonas reinhardtii*, we found that pyrenoid proteins share a sequence motif. We show that the motif is necessary and sufficient to target proteins to the pyrenoid and that the motif binds to Rubisco, suggesting a mechanism for targeting. The presence of the Rubisco-binding motif on proteins that localize to the tubules and on proteins that localize to the matrix-starch sheath interface suggests that the motif holds the pyrenoid's three subcompartments together. Our findings advance our understanding of pyrenoid biogenesis and illustrate how a single protein motif can underlie the architecture of a complex multilayered phase-separated organelle.

INTRODUCTION

CO₂ is the source of carbon for nearly the entire biosphere (1, 2), but its availability is limited in many environments. To overcome this limitation, many photosynthetic organisms use energy to locally concentrate CO₂ around the CO₂-assimilating enzyme Rubisco (3–6). In eukaryotic algae, which perform a major fraction of primary production in the oceans (7), concentrated CO₂ is supplied to Rubisco inside a microcompartment, the pyrenoid (8). The pyrenoid consists of a spheroidal protein matrix containing Rubisco, which in nearly all algae is traversed by membranous tubules through which CO₂ is delivered (9, 10). In green algae, the Rubisco matrix is additionally surrounded by a starch sheath (11) that limits CO₂ leakage out of the pyrenoid (Fig. 1A) (12).

In the model green alga *Chlamydomonas reinhardtii* (*Chlamydomonas* hereafter), two proteins are known to play central roles in pyrenoid assembly, EPYC1 (13) and SAGA1 (Fig. 1B) (14). EPYC1 is a ~35-kDa intrinsically disordered protein that phase-separates with Rubisco to form the pyrenoid matrix (13, 15, 16). SAGA1 is a ~180-kDa protein with a starch-binding domain that localizes to the periphery of the matrix and is required for normal pyrenoid morphology, although the underlying molecular mechanism is unknown (14). Here, we present how a SAGA1 antibody led us to discover that pyrenoid-localized proteins share a common Rubisco-binding protein sequence motif, revealing a mechanism by which proteins are targeted to the pyrenoid and allowing us to propose a model for how the pyrenoid's three subcompartments are connected to each other.

RESULTS

An anti-SAGA1 antibody recognizes multiple pyrenoid proteome proteins

In an effort to immunoprecipitate SAGA1-interacting proteins, we incubated a polyclonal SAGA1 antibody with clarified cell lysates

from wild-type cells (Fig. 1C and fig. S1). In addition to SAGA1, the antibody precipitated multiple proteins found in the pyrenoid proteome (17), suggesting at first that those proteins may interact with SAGA1. The precipitated proteins included EPYC1, SAGA2, RBMP1, RBMP2, and CSP41A (Fig. 1, D and E, and table S1). The protein we named SAGA2 (Cre09.g394621) is 30% identical to SAGA1 (Cre11.g467712) and, like SAGA1, has a predicted starch-binding domain (fig. S2, A to C). The proteins we named Rubisco-binding membrane proteins RBMP1 (Cre06.g261750) and RBMP2 (Cre09.g416850) have predicted transmembrane domains and were previously found to bind to Rubisco (fig. S2, D to G) (18). CSP41A (Cre10.g440050) is a predicted chloroplast epimerase (fig. S2H) (19).

We found that the precipitation of these pyrenoid proteome proteins was not mediated by SAGA1 but rather that the proteins were directly bound by the SAGA1 antibody. Three lines of evidence supported this conclusion. First, the same proteins were immunoprecipitated from a *saga1* mutant lysate (Fig. 1, D and E, and table S1). Second, the predicted molecular weights of EPYC1, SAGA2, RBMP1, and CSP41A showed remarkable agreement with the multiple polypeptides recognized by the same SAGA1 antibody in immunoblots (Fig. 1F; please see Materials and Methods for a potential explanation of why other proteins, including RBMP2, were apparently not detected in these immunoblots) (14). Third, the ~35-kDa band was absent in anti-SAGA1 immunoblots of *epyc1* mutant cell extracts, strongly suggesting that EPYC1 was directly recognized by the SAGA1 antibody (Fig. 1F). This putative EPYC1 band showed an apparent upward shift and decreased signal in the *saga1* mutant, which could be due to a change in the expression and/or posttranslational modification of EPYC1 in the absence of SAGA1. The apparent direct binding of our SAGA1 antibody to these pyrenoid proteins led us to hypothesize that the antibody recognizes a common sequence present on all six proteins, raising questions about the nature and function of this sequence.

SAGA1, SAGA2, RBMP1, RBMP2, EPYC1, and CSP41A share a common protein motif

To identify potential sequences in the proteins that our antibody could bind, we searched their sequences for similarity to the 19 C-terminal amino acids of SAGA1, against which our antibody had

Copyright © 2020
The Authors, some
rights reserved;
exclusive licensee
American Association
for the Advancement
of Science. No claim to
original U.S. Government
Works. Distributed
under a Creative
Commons Attribution
NonCommercial
License 4.0 (CC BY-NC).

Downloaded from <http://advances.sciencemag.org/> on December 14, 2020

¹Department of Molecular Biology, Princeton University, Princeton, NJ 08544, USA.

²Department of Plant Biology, Carnegie Institution for Science, Stanford, CA 94305, USA.

³Department of Biology, Stanford University, Stanford, CA 94305, USA.

⁴Department of Biology, University of York, York YO10 5DD, UK.

*Present address: Department of Molecular Biology and Biotechnology, University of Sheffield, Sheffield S10 2TN, UK.

†Corresponding author. Email: mjonikas@princeton.edu

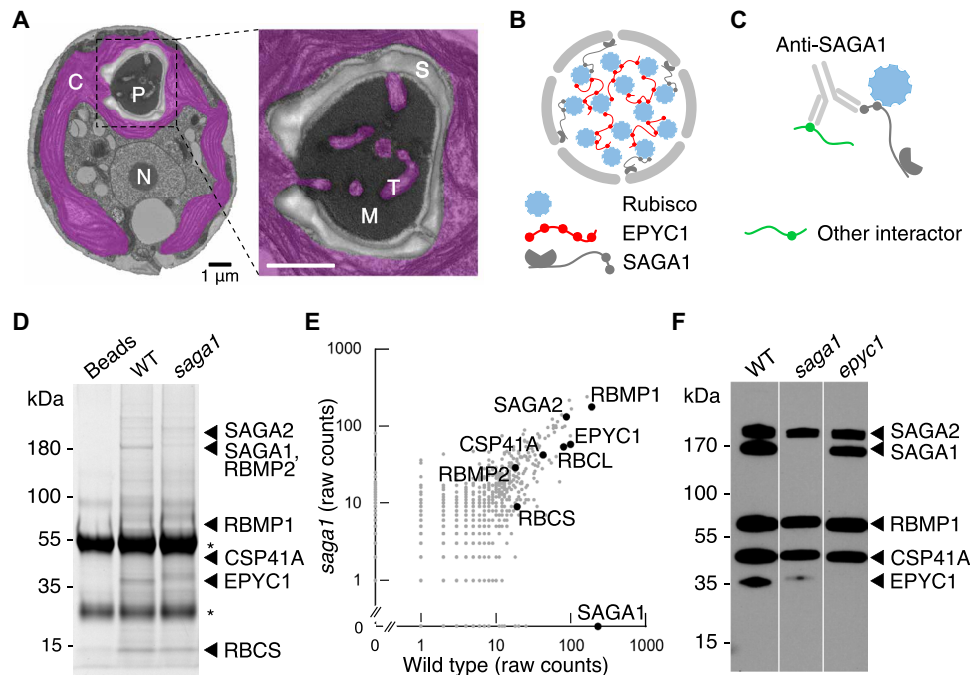


Fig. 1. A polyclonal antibody raised against the pyrenoid protein SAGA1 interacts with at least five other pyrenoid proteins. (A) Electron micrograph of a median plane section through an air-acclimated *Chlamydomonas* cell. N, nucleus; C, chloroplast; P, pyrenoid; M, Rubisco matrix; T, tubules; S, starch sheath. Scale bar, 1 μ m. (B) Two proteins, the Rubisco linker EPYC1 and the starch sheath-binding protein SAGA1, have been previously characterized and localized to the pyrenoid. (C) An anti-SAGA1 antibody was incubated with cell lysate in an effort to coimmunoprecipitate proteins that bind to SAGA1. (D) Coomassie-stained SDS-PAGE of proteins immunoprecipitated by the anti-SAGA1 antibody from wild-type (WT) and *saga1* mutant lysates. Immunoprecipitated proteins were eluted from anti-SAGA1 antibodies on beads by boiling; beads not incubated with lysate were also boiled for reference. Asterisks show heavy and light immunoglobulin chains. (E) Proteins immunoprecipitated by the SAGA1 antibody from wild type and *saga1* were identified by mass spectrometry. Raw spectral counts are plotted on a log scale. (F) Anti-SAGA1 Western blot on denatured protein extracted from wild type, *saga1*, and *epyc1*.

been raised (14). Sequence alignment revealed that all six proteins contain a common motif, with sequence [D/N]W[R/K]XX[L/I/V/A], present at their exact C termini (Fig. 2, A and B).

We identified an additional 14 variants of this motif at internal positions across all six proteins (Fig. 2, A and B). Most internal occurrences of the motif are immediately followed by an aspartic acid (D) or a glutamic acid (E), both of which contain a carboxyl group. This observation suggests that when the motif is found at the C terminus of the protein, the C-terminal carboxyl group of the protein is functionally important, and when the motif is found internally in the protein, this functionality is provided by the carboxyl group of the D or E side chains that follow the motif.

Further inspection of internal and C-terminal motifs revealed additional characteristics. One of the motif's X residues is usually a D/E. In most instances of the motif, a proline is found two or three positions upstream of the tryptophan, and one or more positively charged residues (R or K) are found six to eight positions before the tryptophan (Fig. 2B). In summary, all six of the pyrenoid proteins share multiple copies of a common motif, which appears to have been recognized by our SAGA1 antibody.

The motif is necessary and sufficient for targeting a protein to the pyrenoid

The prevalence of a common motif among pyrenoid proteome proteins led us to hypothesize that this motif mediates targeting of proteins to the pyrenoid. To test this hypothesis, we evaluated the impact of disrupting the motif in a pyrenoid-localized protein. We

selected Cre10.g430350, an uncharacterized protein present in the pyrenoid proteome (17), which contains a single internal copy of the motif. We validated this protein's pyrenoid localization by expressing a fluorescently tagged wild-type protein (Fig. 2C and fig. S3A). Disruption of this fluorescently tagged protein's motif by mutating WR to AA caused the protein to localize homogeneously throughout the chloroplast (Fig. 2D and fig. S3B), indicating that the motif is necessary for targeting this protein to the pyrenoid.

To determine whether the motif is sufficient for targeting a protein to the pyrenoid, we added the motif to ferredoxin 1 (FDX1; Cre14.g626700), a small soluble protein that natively localizes throughout the chloroplast stroma. To increase the chances of observing the motif's effect, we chose to add three tandem copies of the motif to FDX1. Addition of the motifs relocalized fluorescently tagged FDX1 exclusively to the pyrenoid matrix (Fig. 2E and fig. S4, A and B). We obtained a similar result with another chloroplast protein (fig. S4, C and E). These results demonstrate that the motif is sufficient to localize a chloroplast protein to the pyrenoid matrix.

The motif binds to Rubisco

Two observations led us to hypothesize that proteins bearing the motif are recruited to the pyrenoid via binding to Rubisco. First, the motif is present in each of the regions that were found to mediate EPYC1's binding to Rubisco in yeast two-hybrid experiments (20) and as short peptides *in vitro* (21). Second, the other five motif-containing proteins were also previously found to bind to Rubisco:

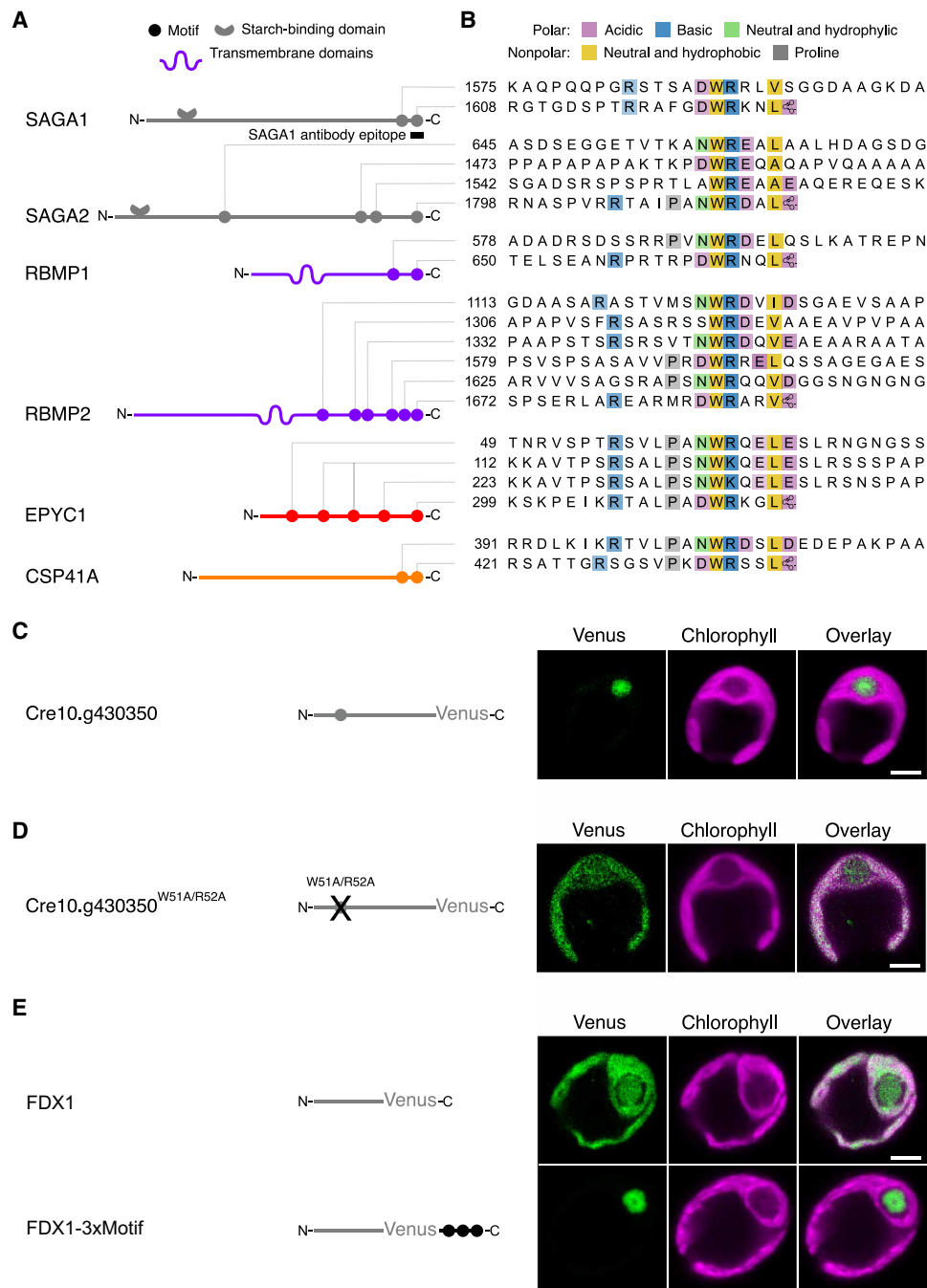


Fig. 2. A motif found on pyrenoid proteins is necessary and sufficient for targeting proteins to the pyrenoid. (A) The location of motifs along the primary sequence of each protein is shown (not to scale). The SAGA proteins each have a predicted starch-binding domain. The RBMP proteins each have predicted transmembrane domains (see fig. S2). (B) Sequence alignment of protein regions containing the pyrenoid motif. Motif residues are colored by physicochemical properties. Intensity of coloring is proportional to frequency at a given amino acid position. Peptides with the sequences shown in (B) were synthesized, and their binding to Rubisco was measured by surface plasmon resonance and peptide tiling array (see Fig. 3). (C) The localization of poorly characterized protein Cre10.g430350 was determined by tagging with the fluorescent protein Venus. (D) The localization of the same protein was determined after mutation of the central tryptophan-arginine dipeptide of the motif to a double alanine. (E) Localization of Venus-tagged FDX1 protein without and with the C-terminal addition of three copies of the C-terminal SAGA2 motif. Localization in (C) to (E) was determined by transforming the corresponding constructs into wild-type *Chlamydomonas*. Scale bar, 2 μ m.

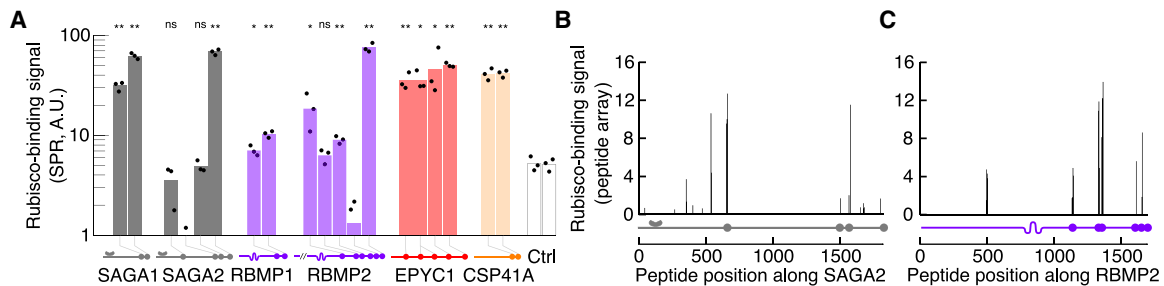


Fig. 3. The motif binds to Rubisco. (A) Peptides containing motifs from the indicated proteins were synthesized, and their binding to Rubisco was measured by surface plasmon resonance (SPR). A.U., arbitrary units. Two peptides not containing the motif were included as controls (Ctrl). Each dot shows the binding response of an independent replica. Negative values (when the experimental binding signal was lower than that of the reference cell) are not plotted. The positions of the predicted motifs are indicated below the graph (not to scale). Significance levels of increased binding relative to control peptides were determined using Welch's *t* test. * $P < 0.05$ and ** $P < 0.01$. (B and C) Arrays of 18-amino acid peptides tiling across the sequences of SAGA2 (B) and RBMP2 (C) were synthesized and probed with Rubisco. The binding signal in (B) and (C) is normalized to a control EPYC1 peptide known to bind to Rubisco (one unit of binding) (21). The positions of motifs are indicated below each graph (to scale).

SAGA1 by yeast two-hybrid (14), and SAGA2, RBMP1, RBMP2, and CSP41A by affinity purification–mass spectrometry (18).

To determine whether each variant of the motif can bind to Rubisco, we used surface plasmon resonance to measure the binding of synthetic peptides to Rubisco. With this method, 14 of 20 peptides representing motif variants had a higher affinity to Rubisco than peptides with random sequences. Peptides with C-terminal motifs systematically showed higher affinity to Rubisco than peptides with internal motifs (Fig. 3A). Rubisco bound to all predicted internal motif sites when we incubated purified Rubisco with arrays of peptides tiling across the full-length proteins (Fig. 3, B and C, and fig. S5, A to D; C-terminal sites could not be assayed by this method). These results indicate that all variants of the motif (Fig. 2B) bind to Rubisco *in vitro* in at least one of our assays. Binding of the proteins to the SAGA1 antibody in the immunoprecipitation experiment (Fig. 1, C and D) suggests that at least one motif on each protein is accessible for Rubisco binding when the proteins adopt their native folding *in vivo*.

In a parallel study (21), we determined where the motif binds on Rubisco. In that study, as part of an effort to understand how EPYC1 clusters Rubisco to form the pyrenoid matrix, we obtained a cryo–electron microscopy structure of Rubisco bound to a peptide from EPYC1. A Rubisco-binding motif is present at positions N₆₂W₆₃R₆₄Q₆₅E₆₆L₆₇E₆₈ on this EPYC1 peptide and plays a central role in the binding interface. One EPYC1 peptide binds to each of the eight Rubisco small subunits of the Rubisco holoenzyme. The motif-containing portion of the peptide adopts an α helix that binds to the Rubisco surface. R₆₄ of the peptide, corresponding to the [R/K] of the motif, forms a salt bridge with a glutamic acid of the Rubisco small subunit. In addition, W₆₃ and L₆₇ of the peptide, corresponding to the W and [L/I/V/A] of the motif, respectively, contribute to a hydrophobic interaction with three hydrophobic residues of the Rubisco small subunit. The central role of the motif residues in the binding interface strongly suggests that all instances of the motif studied here bind to Rubisco using the same mechanism.

The motif is present in proteins other than the ones we studied here

We identified putative instances of the motif in the *Chlamydomonas* proteome using a simple scoring scheme (table S2; Materials and Methods). Motif scores ranged from 0 (for only a WR or WK dipep-

ptide) to 6 (for sequences that share all canonical features of the motif). High motif scores were modestly enriched among pyrenoid proteome proteins relative to other proteins in the chloroplast proteome ($P = 0.047$; fig. S6). Twenty-two of 191 pyrenoid proteome proteins have at least one putative motif with a score of 3 or greater, and 100 of these proteins have at least a WR or WK dipeptide. We hypothesize that some of the pyrenoid-localized proteins that do not contain the motif are targeted to the pyrenoid by binding to a motif-containing protein. Some chloroplast proteome proteins that have a putative motif do not localize to the pyrenoid: At least one motif with a score of 3 or greater is present in 52 of 735 chloroplast proteins that are not in the pyrenoid proteome. One potential explanation for this observation is that to mediate targeting to the pyrenoid, a motif must not only be present in the protein sequence but also be accessible on the surface of the folded protein for interaction with Rubisco. Motifs that are present in the internal folds of a protein would not be expected to affect protein localization. We found that the motifs of pyrenoid proteome proteins are more frequently situated in predicted disordered regions, compared with the motifs of chloroplast proteins that are not found in the pyrenoid proteome (Welch's *t* test $P = 0.007$; fig. S7), supporting the idea that motif accessibility is important for pyrenoid targeting.

Together, our findings suggest a mechanism for targeting proteins to the pyrenoid, involving the presence of a common motif that recruits its protein to the pyrenoid via direct binding interactions with Rubisco. It is possible that the mechanism operates via random diffusion of the motif-bearing protein through the chloroplast, followed by capture of the motif by Rubisco when the protein encounters the pyrenoid matrix.

The motif appears to mediate binding between the pyrenoid's three subcompartments

Beyond providing a mechanism for targeting proteins to the pyrenoid matrix, the motif appears to play a role at the interfaces of the pyrenoid's three subcompartments. Although Rubisco and EPYC1 are localized in the matrix (Fig. 4A and fig. S8, A and B), we observed that some motif-containing proteins localize to pyrenoid regions other than the matrix. Fluorescently tagged RBMP1 and RBMP2 localized to the tubules (Fig. 4A and fig. S8, C and D). SAGA1 (14) and SAGA2 localized to the interface between the Rubisco matrix and the starch sheath (Fig. 4A and fig. S8, E and F).

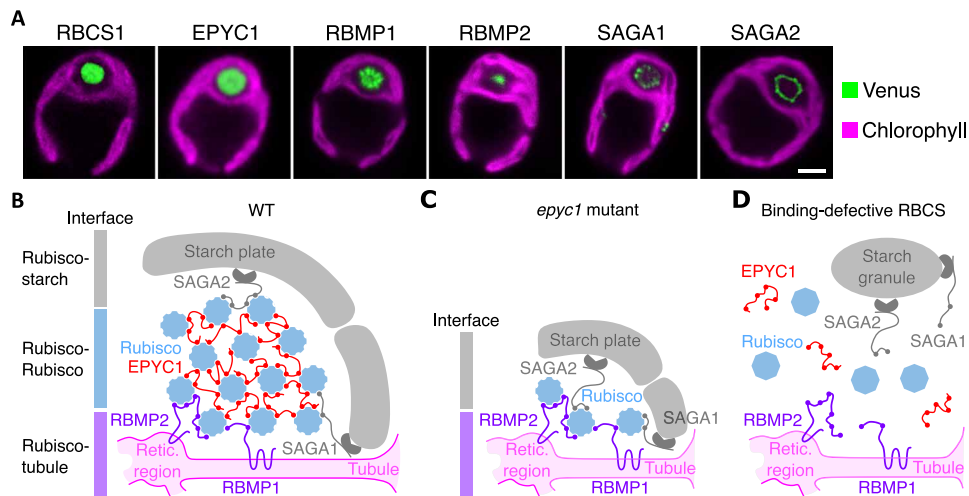


Fig. 4. The motif orchestrates the architecture of the pyrenoid's three subcompartments. (A) Representative confocal images of Venus-tagged proteins that have the Rubisco-binding motif and Rubisco small subunit (RBCS1). Chlorophyll autofluorescence delimits the chloroplast. Scale bar, 2 μ m. (B) Proposed model for how the motif mediates assembly of the pyrenoid's three subcompartments in wild type. The motif on tubule-localized transmembrane proteins RBMP1 and RBMP2 mediates Rubisco binding to the tubules [Retic. region is the reticulated region of the tubules (9)]. Multiple copies of the motif on EPYC1 link Rubiscos to form the pyrenoid matrix (21). At the periphery of the matrix, the motif on starch-binding proteins SAGA1 and SAGA2 mediates interactions between the matrix and surrounding starch sheath. (C) The model in (B) explains the matrix-less phenotype observed in EPYC1-less mutants. (D) The model also explains the absence of matrix and starch plates in mutants where Rubisco's binding site for the motif has been disrupted (21).

These observations together with previous work (9, 13–17, 20) are consistent with a model where the Rubisco-binding motif holds together the pyrenoid matrix, the traversing tubules, and the surrounding starch sheath (Fig. 4B). In this model, multiple copies of the motif on EPYC1 mediate cohesion of the matrix by bringing Rubisco holoenzymes together (21). Moreover, the presence of the same motif on the pyrenoid tubule-localized transmembrane proteins, RBMP1 and RBMP2, recruits Rubisco to the tubules and favors assembly of the matrix around them. Last, the presence of the motif on proteins with starch-binding domains, SAGA1 and SAGA2, which localize to the pyrenoid periphery, mediates adherence of the starch sheath to the matrix.

The slightly different localization patterns of RBMP1 and RBMP2 suggest that RBMP1 and RBMP2 could each promote Rubisco matrix binding to a different part of the tubules. Our microscopy data suggest that RBMP2 is confined to the central reticulated region of the tubules (9), whereas RBMP1 appears to localize to the more peripheral tubular regions to the exclusion of the reticulated region. Similarly to the RBMPs, the different localization patterns of the SAGAs also suggest that they may each interface with different features on the starch sheath. As described previously (14), SAGA1 localized to puncta at the periphery of the matrix, likely at the interface between the Rubisco matrix and the starch sheath. We observed that SAGA2 also localized to that interface but appeared to cover the surface of the matrix more homogeneously than SAGA1.

The model explains several previously puzzling observations. First, in a mutant lacking EPYC1, a pyrenoid-like structure still assembles around the tubules, containing some Rubisco enclosed by a starch sheath, although the canonical matrix is absent (13). The presence of both Rubisco and starch in this structure can be explained by a layer of Rubisco that serves as a bridge between motif-containing proteins RBMP1 and RBMP2 on the tubules and

motif-containing proteins SAGA1 and SAGA2 on the surrounding starch sheath (Fig. 4C). Second, point mutations that disrupt the EPYC1 binding site on Rubisco not only eliminate the matrix but additionally disrupt the association of the starch sheath with the pyrenoid (21). The additional disruption of the starch sheath can be explained by the same Rubisco-binding site being required not only for binding to EPYC1 but also for binding the motif on other proteins that connect the starch and tubules to Rubisco (Fig. 4D).

DISCUSSION

Our results provide insights into pyrenoid biogenesis and function

Our work reveals a ubiquitous Rubisco-binding motif that is necessary and sufficient for targeting proteins to the pyrenoid and also appears to mediate the overall assembly of the pyrenoid's three subcompartments. The eightfold symmetry of the Rubisco holoenzyme allows it to interact simultaneously with multiple binding partners via the motif, making Rubisco a central structural hub of the pyrenoid. The valency and binding strengths of the motif to Rubisco vary among the binding partners (Figs. 2A and 3), which could play a role in their relative priority of access to Rubisco, as observed for other phase-separated organelles (22–24).

The Rubisco-EPYC1 condensate can enhance CO₂ fixation only if it is anchored around the pyrenoid tubules, which are thought to provide concentrated CO₂ (8, 9, 25, 26). Identification in the present work of two tubule-localized proteins that bind to Rubisco provides a plausible explanation for how the *Chlamydomonas* pyrenoid forms preferentially around tubules rather than anywhere else in the chloroplast. Considering that the tubules can form independently of the matrix (27, 28), whether the motif is required for RBMPs to localize to the tubules remains to be investigated. Our

observation that RBMP1 and RBMP2 localize to different subdomains of the tubules suggests that an additional localization mechanism may be at play, such as a preference for a specific membrane curvature.

RBMP1 is predicted to be a Ca^{2+} -activated anion channel of the bestrophin family (fig. S2, D and F), several members of which are thought to supply HCO_3^- to the lumen of the tubules for conversion to CO_2 (29). Although the previously described members localized primarily to membranes outside the pyrenoid, RBMP1 localizes exclusively to the tubules themselves, which may allow it to directly feed HCO_3^- to the tubules for conversion to CO_2 .

The principles described here likely apply more broadly

Pyrenoids are thought to have evolved independently multiple times through convergent evolution (30–32). *Chlamydomonas* belongs to the green algal order Volvocales, a lineage that has been evolving independently from other green algae for the past 70 to 200 million years (33). Homologs of all six pyrenoid proteins studied here are present in other Volvocales, and in each of these homologs, one or more copies of the motif are conserved (fig. S9, A and B to G). The amino acids of the Rubisco small subunit that are essential for binding the motif (21, 34) are also broadly present in the Volvocales (fig. S9H). These results suggest that the motif described here and its functions in pyrenoid biogenesis and protein targeting evolved before the divergence of the Volvocales.

Although the specific sequences and proteins may be different in other algal lineages, we hypothesize that the organizational principles described here apply broadly to pyrenoids across the tree of life. The convergent evolution of pyrenoids may well have been facilitated by the possibility of using a common motif and binding site on Rubisco to perform three functions essential to all pyrenoids: clustering of Rubisco into a matrix, targeting of proteins to the matrix, and connecting the matrix to other structures.

Our findings advance the basic understanding of the biogenesis of the pyrenoid and provide a framework for engineering a pyrenoid into crops for improving yields (8, 35, 36). More broadly, the system presented here provides a remarkable example of how the architecture of a complex phase-separated organelle can be defined by a simple organizing principle.

MATERIALS AND METHODS

Strains and culture conditions

The *C. reinhardtii* strain CC-4533 (37) was the wild type for all experiments (hereafter WT) and parent for all genetic transformations. The fluorescently tagged strain showing the native localization of SAGA1 was *saga1-paro^R*; SAGA1-Venus-3×FLAG-hyg^R (14). All strains were maintained at room temperature (RT) (~22°C) under very low light (<10 $\mu\text{mol photons m}^{-2} \text{s}^{-1}$), on solidified tris-acetate-phosphate medium (TAP + 1.5% agar) (pH 7.4), using a revised trace elements recipe for increased growth (38). Medium was supplemented with paromomycin at 2 $\mu\text{g ml}^{-1}$ for all strains (except WT) and, additionally, with hygromycin at 6.25 $\mu\text{g ml}^{-1}$ for the SAGA1-Venus strain.

All experiments were conducted on photoautotrophically grown cells. Liquid cultures were primed with a loopful of TAP-agar grown cells not older than 2 weeks resuspended into tris-phosphate medium (TP, same composition as TAP above, but without acetate) to a starting concentration less than $10^5 \text{ cells ml}^{-1}$. Cultures were main-

tained in an orbital incubator-shaker (Infors) with controlled conditions: 130 rpm, continuous cool white fluorescent light at ~175 $\mu\text{mol photons m}^{-2} \text{s}^{-1}$, 22°C, air-enriched with 3% CO_2 (v/v) for faster growth, and rescue of *saga1* and *epyc1*. Culture volume for Rubisco extractions was ~500 ml, for coimmunoprecipitations was ~250 ml, and for imaging and Western blots was ~50 ml. Cells were grown in conical flasks with a total capacity at least four times that of the volume of the medium. Culturing time allowed at least six rounds of mitotic division. Cell densities were not allowed to exceed $10^7 \text{ cells ml}^{-1}$ at any point in time and were subcultured accordingly. Cell densities were measured using a Countess II F automated cell counter (Thermo Fisher Scientific).

For most experiments, cells were acclimated to air-level CO_2 concentrations for 6 hours before harvesting to maximize expression of the CO_2 -concentrating mechanism and packaging of Rubisco into a pyrenoid (39, 40). Cultures destined for confocal imaging were acclimated overnight (~16 hours). Acclimation to air-level CO_2 was performed by pelleting high- CO_2 grown cells (1000g, 10 min, RT), followed by gentle resuspension by agitation in fresh air-equilibrated TP medium, before transfer to an air-equilibrated chamber of the same orbital incubator-shaker (agitation, light, and temperature as above). CO_2 concentration was periodically monitored with a CO_2 sensor (CO2Meter). All experiments aimed for a cell density at the time of harvesting of $\sim 2 \times 10^6$ to $4 \times 10^6 \text{ cells ml}^{-1}$. All strains generated in this work were deposited at the *Chlamydomonas* Resource Center (<https://chlamycollection.org/>).

Coimmunoprecipitation and mass spectrometry analysis

Native protein complexes were extracted according to the protocol described by Mackinder *et al.* (18), with minor modifications. Briefly, all protein extraction steps were performed at 4°C in a cold room, using only fresh algal material. After harvesting (1000g, 5 min, 4°C), cells were washed once in ice-cold TP, repelleted, and suspended in a 1:1 (v/w) ratio of ice-cold 2× immunoprecipitation buffer [400 mM sorbitol, 100 mM Hepes, 100 mM KOAc, 4 mM $\text{Mg}(\text{OAc})_2 \cdot 4\text{H}_2\text{O}$, and 2 mM CaCl_2] containing a protease inhibitor cocktail (cOmplete, Roche) and phosphatase inhibitors (2 mM NaF and 0.6 mM Na_3VO_4). To ease the grinding, the cell slurry was transformed into frozen droplets of ~5 mm diameter by slowly releasing the cell/buffer mixture into liquid N_2 through a fine-tipped transfer pipette held ~15 cm above the cryogenic liquid. Releases were timed so as to avoid clumping of not fully frozen material. Each assay used ~1 g of cell/buffer mixture. Mass spectrometry analysis was performed at the Stanford University Mass Spectrometry facility, as previously described (18). Raw spectral counts are given in table S1.

Minor deviations from (18): A 50:50 mixture of Dynabeads protein A and protein G was used; incubation was with an anti-SAGA1 antibody (YenZym); protein complexes bound to magnetic beads were released by boiling for 1 min; denatured protein samples were run on denaturing tris/glycine gradient gel (4 to 15%) and stained with EZBlue (Thermo Fisher Scientific).

Immunoblot analysis

Total proteins were extracted as follows. Cell suspensions (10 ml) were pelleted (3500g, 10 min, 4°C), resuspended in 300 μl of lysis buffer [5 mM Hepes-KOH (pH 7.5), 100 mM dithiothreitol, 100 mM Na_2CO_3 , 2% SDS, 12% sucrose, and cOmplete protease inhibitor cocktail], transferred to a microcentrifuge tube, and heat-denatured in a thermomixer (37°C, 10 min, 750 rpm). Lysate was clarified (16,000g,

5 min, 4°C), aliquoted, flash-frozen in liquid N₂, and stored at -80°C until analysis on SDS-polyacrylamide gel electrophoresis (SDS-PAGE).

Gel loading was normalized by total chlorophyll a + b content. Pigments were extracted from 50 µl of cell lysate with 2 ml of 100% methanol. Chlorophylls contained in the clarified extract (16,000g, 2 min) were quantified according to the following equations: chlorophyll a (µg ml⁻¹) = 16.29 A₆₆₅ - 8.54 A₆₅₂; chlorophyll b (µg ml⁻¹) = 30.66 A₆₅₂ - 13.58 A₆₆₅ (41), after correction for A₇₅₀. Absorbances were measured in a SmartSpec Plus spectrophotometer (Bio-Rad).

Proteins were separated by size on a denaturing tris/glycine gradient gel (4 to 15%, Criterion TGX, Bio-Rad; 90 V constant, 105 min) and transferred to 0.45 µm polyvinylidene difluoride membrane (Immobilon-P, MilliporeSigma) using a wet electroblotting system (Criterion Blotter, Bio-Rad) and Towbin buffer [20% methanol, 25 mM tris, 192 mM glycine, 20% (v/v) methanol, and 0.05% SDS] at 30 V constant overnight.

For immunoblot analysis, membranes were blocked in tris-buffered saline (TBS) + 0.1% Tween-20 (TBST) containing 5% nonfat dry milk for 1 hour at RT or overnight at 4°C, under gentle agitation. Incubations with the primary antibodies were performed in TBST containing 2.5% milk for 1 hour at RT or overnight at 4°C. Membranes were washed in TBST (4×, 10 min, rocking platform) before incubation with the secondary antibody for 1 hour at RT. Membranes were washed again in TBST (4×, 10 min). Immunoreactive proteins were detected using enhanced chemiluminescence (WesternBright ECL, Advansta) followed by x-ray film processing (CL-XPosure Film, Thermo Fisher Scientific; SRX-101A, Konica-Minolta).

Primary antibodies were obtained from YenZym (anti-SAGA1 and anti-EPYC1) and MilliporeSigma (monoclonal anti-FLAG M2 antibody). The polyclonal anti-Rubisco antibody was a gift from H. Griffiths, University of Cambridge, UK. Goat anti-mouse immunoglobulin G (IgG) (H+L) and goat anti-rabbit IgG (H+L) were from Thermo Fisher Scientific. Dilutions: anti-FLAG 1:2500 + secondary 1:10,000; anti-SAGA1 1:2500 + secondary 1:10,000; anti-EPYC1 1:5000 + secondary 1:10,000; anti-Rubisco: 1:10,000 + secondary 1:20,000.

A note on the results from the immunoblot in Fig. 1F: One might ask why only five bands appeared when wild-type lysates were probed by the anti-SAGA1 antibody, considering that variants of the motif are present in hundreds of proteins in the proteome (table S2). One potential explanation for this discrepancy is that the anti-SAGA1 antibodies may be very specific to certain feature variants of the motif that are found only in SAGA1 and in the other four proteins that yield bands in this experiment. For example, because the anti-SAGA1 antibodies were generated against a peptide representing the C terminus of SAGA1, it is possible that the anti-SAGA1 antibodies only recognize the motifs on the C termini of proteins, which would prevent recognition of the vast majority of the motifs we identified in the proteome. Additional specificity to other features such as a C-terminal leucine may explain why SAGA1, SAGA2, RBMP1, EPYC1, and CSP41A were apparently detected in Fig. 1F, whereas RBMP2 (which unlike the other five proteins has a C-terminal valine) was apparently not detected in Fig. 1F (one would otherwise expect RBMP2 to be visible as a band at ~180 kDa in the *saga1* mutant) and gave the fewest spectral counts of the six proteins in the anti-SAGA1 immunoprecipitation experiment (Fig. 1E and table S1).

Rubisco purification and quantification

WT Rubisco was extracted as follows. Cell cultures (500 ml) were harvested (~4000g, 15 min, 4°C), resuspended in 1.5 ml of lysis buffer [50 mM bicine (pH 8.0), 10 mM NaHCO₃, 10 mM MgCl₂, and 1 mM dithiothreitol] containing a protease inhibitor cocktail, and transferred to an ice-cold 50 ml Falcon. Cells were sonicated on ice in 30 s bursts, followed by 30 s pauses with a microprobe set at 60% amplitude (Q125 + CL-18 probe, QSonica), until no intact cells were left. Progress of the lysis was monitored with a light microscope (400×). Total soluble proteins were isolated by centrifugation (16,000g, 30 min, 4°C), and 650 µl of the clarified lysate was loaded on top of a thin-wall ultracentrifugation tube (Ultra-Clear, Beckman Coulter) containing 12 ml of a 10 to 30% sucrose gradient prepared with the lysis buffer. Gradients were made the previous day with a gradient maker (BioComp Instruments) and left to equilibrate at 4°C overnight. Gradients were run at 37,000 rpm for 20 hours in an ultracentrifuge (Optima XE-100 + SW 41 Ti rotor, Beckman Coulter). Fractions (750 µl) were collected either with a piston gradient fractionator (BioComp Instruments) or manually by gravity. Fractions enriched in Rubisco were identified by running 10 µl aliquots in 2:1 Laemmli buffer on SDS-PAGE, followed by staining with EZBlue (same conditions as detailed in the previous section). Fractions with the highest concentration of Rubisco (bands at 55 and 15 kDa for the Rubisco large and small subunits, respectively) were pooled, and buffer was exchanged by dialysis at 4°C overnight (Slide-A-Lyzer 20k molecular weight cut-off, Thermo Fisher Scientific) using the same buffer as the one for the two Rubisco-peptide binding assays (see the next two sections). Rubisco was concentrated to ~2 mg ml⁻¹ on centrifugal filters (Amicon Ultra-4 100K, MilliporeSigma) before use. Rubisco concentration was determined by Bradford assay (Quick Start Bradford Dye Reagent + BSA Standard Set, Bio-Rad).

Binding of free synthetic peptides to immobilized Rubisco measured by surface plasmon resonance

The surface plasmon resonance experiment was performed on a Biacore 3000 (GE Healthcare) at constant 25°C, using the proprietary Biacore Control Software v.4.1, embedded application wizards “Surface preparation” and “Binding analysis,” and GE’s immobilization kit, buffers, and consumables (no deviation from the manufacturer’s instructions). Optimal pH of 4.5 for amine coupling of purified Rubisco onto a CM5 sensor chip was identified with the aid of the “pH scouting” script. Variable amounts of Rubisco were immobilized in three independent assays (each independent assay used fresh Rubisco from an independent extraction), spanning 2000 to 4000 resonance units (RUs) using the “Aim for immobilized level” script. All peptides (see Fig. 2B) were synthesized by GenScript, with purity ≥85% and nitrogen content validated by analysis on an organic elemental analyzer. Binding assays were run in PBS-P+ buffer [20 mM phosphate buffer (pH 7.4), 2.7 mM KCl, 137 mM NaCl, and 0.05% (v/v) P20 surfactant]. The same buffer was used for peptide solubilization and Rubisco dialysis (see the previous section). Lyophilized peptides were solubilized to a stock concentration of 2.5 mM, aliquoted, flash-frozen in liquid N₂, and stored at -80°C until needed. Binding response was measured at a peptide concentration of 1 mM during a single 3 min injection into the sensor’s flow cells at a flow rate of 40 µl min⁻¹. Dissociation was measured while injecting buffer only, at a rate of 40 µl min⁻¹ for 2.5 min. The chip surface was regenerated by flowing buffer for 5 min at a rate of 40 µl min⁻¹. Return to baseline was observed

for all peptides except the one corresponding to RBMP2's fourth instance of the motif, which remained partially insoluble even after addition of dimethyl sulfoxide (DMSO) and was therefore discarded from further analysis (see Fig. 3A). Binding responses were normalized to 1000 RUs of immobilized Rubisco to allow comparison across independent repeats and plotted on a \log_{10} scale. Peptides lacking the predicted Rubisco-binding motif were used as negative controls: GYFAVDHRPNLAILQGELGTKSESMDVRI and SKPAVDLRFYLEIGMQNTA.

Binding of free Rubisco to immobilized synthetic peptides measured by peptide tiling array

Four peptide arrays [30 × 20 spots each on 15 × 10 cm cellulose membranes, (42)] were ordered from the Koch Institute for Integrative Cancer Research at Massachusetts Institute of Technology, Biopolymers and Proteomics Laboratory (Cambridge, MA). The arrays were composed of 18-amino acid peptides that tiled across the full length of each of the six Rubisco-binding protein sequences, with a step size of three amino acids. Each peptide was represented by a single spot, except for EPYC1, which included a nonrandomized duplicate in positions 499 to 598 on membrane #1. All other locations of peptides were randomized. EPYC1 (100 spots, two repeats), CSP41A (142 spots), and RBMP1 (217 spots) were arrayed on the same membrane. RBMP2, SAGA1, and SAGA2 each required a separate membrane (558, 537, and 594 spots, respectively). Membranes were incubated with 750 to 2000 μg of purified Rubisco and probed by anti-Rubisco Western blot, as described above. The peptide corresponding to the very C terminus of each protein does not accurately represent the Rubisco-binding motif in this assay, as the peptides are linked to the cellulose via their C termini. This linkage eliminates the carboxyl group, which appears to be important for binding to Rubisco. Binding intensity was quantified in ImageJ (43) by measuring the integrated density of a circle of constant area centered on each blot dot, after background correction on an inverted image (rolling ball radius set to 25 pixels). Binding intensity was normalized to the binding of positive controls to allow comparison across membranes [TRSVLPANWRQELESRLN (21)].

Fluorescent protein tagging and confocal microscopy

All fluorescently tagged proteins in this study were tagged with the fluorescent protein Venus followed by three copies of the FLAG epitope. Open reading frames of the two chloroplast proteins *FDX1* and *Cre12.g498550* were cloned by Gibson assembly into the vector pLM005-Venus (KX077945.1), as reported by Mackinder *et al.* (13). A 677-nucleotide (nt)-long GeneArt DNA fragment (Thermo Fisher Scientific) and pLM005-Venus were double digested with Eco RI-HF and Pfl MI (New England Biolabs) and ligated by T4 DNA ligase (16°C). Constructs were validated by Sanger sequencing [759-nt polymerase chain reaction (PCR) product spanning the double digested 643-nt insert] and transformed in WT *Chlamydomonas*, as described in (13), with two modifications: A four-step pulse electroporator (NEPA21, NEPAGENE) was used, and 50 μg of carrier DNA (MP Biochemicals) was added to each transformation.

RBMP1, *RBMP2*, and *SAGA2* were cloned using homologous recombination based on protocols optimized for *Chlamydomonas* (29). Several attempts at cloning *CSP41A* by this and other methods (18) were unsuccessful.

Chlamydomonas transformants were selected on TAP-agar + paromomycin (20 $\mu\text{g ml}^{-1}$), and high expressors were screened on a

fluorescence laser scanner (Typhoon, GE). Expression of full-length fusion proteins was validated by immunoblotting, using an anti-FLAG M2 antibody (figs. S3C and S4F).

Images were captured with a laser scanning microscope (TCS SP5, Leica) using a 100× objective (numerical aperture 1.46). Venus and chlorophyll were excited by argon lasers at 514 and 561 nm, respectively; emission was collected at 525 to 550 nm and 620 to 670 nm, respectively. Zoom-in (3×) acquisition settings were identical for all strains. Two-dimensional median plane cross sections were captured at 200 Hz. Pinhole was set at 1 airy unit. Venus was captured on hybrid detectors, and chlorophyll autofluorescence was captured on photomultiplier tubes. Picture montages were done on ImageJ (43).

Site-directed mutagenesis

Point mutations were generated using a commercial kit (QuikChange II XL, Agilent Technologies). The mutagenic primers were GACTGGCGCAGCTCCGCGGCAACGGAGCTTGAGG and its reverse complement. Mutations were added by PCR to pLM005-Cre10.g430350-Venus-3×FLAG (generated as above) according to the manufacturer's instructions. The mutated pLM005-Cre10.g430350-Venus-3×FLAG codes for a fluorescently tagged Cre10.g430350 with two substitutions (W51A and R52A).

Bioinformatic search for motifs and motif enrichment analysis

We used a point system to identify motifs in the genome. A potential motif must contain a WR or WK dipeptide and is assigned points for the following additional residues (in positions relative to the W, which is considered the "zero" position): (i) a basic residue (R or K) in position -8 to -6: +1 point (no additional point if multiple instances at those three positions), (ii) a proline (P) in position -3 or -2: +1 point, (iii) an aspartic acid (D) or an asparagine (N) in position -1: +1 point, (iv) an aliphatic residue (L, I, V, or A) in position +4: +2 points, and (v) an acidic residue (D or E) or a C terminus in position +5: +1 point. Motif scores for all proteins in the proteome are listed in table S2. To test the statistical significance of the motif enrichment in pyrenoid proteins, we used the Mann-Whitney test to evaluate the difference between the two distributions shown in fig. S6, excluding the six proteins in which we originally noticed the motif to avoid our observations biasing the result. The two distributions are different ($P = 0.047$).

Bioinformatic search of pyrenoid protein homologs

BLAST searches were conducted on publicly accessible repositories and portals: oneKP (44) (<https://db.cngb.org/onekp/>), Phytozome, and GeneBank/National Center for Biotechnology Information. The Rubisco small subunit sequence alignment and phylogenetic tree were generated with MUSCLE (45).

SUPPLEMENTARY MATERIALS

Supplementary material for this article is available at <http://advances.sciencemag.org/cgi/content/full/6/46/eabd2408/DC1>

[View/request a protocol for this paper from Bio-protocol.](#)

REFERENCES AND NOTES

1. J. A. Raven, Contributions of anoxygenic and oxygenic phototrophy and chemolithotrophy to carbon and oxygen fluxes in aquatic environments. *Aquat. Microb. Ecol.* **56**, 177–192 (2009).
2. A. Bar-Even, E. Noor, R. Milo, A survey of carbon fixation pathways through a quantitative lens. *J. Exp. Bot.* **63**, 2325–2342 (2012).

3. C. J. Still, J. A. Berry, G. J. Collatz, R. S. DeFries, Global distribution of C₃ and C₄ vegetation: Carbon cycle implications. *Global Biogeochem. Cycles* **17**, 6–1–6–14 (2003).
4. E. Granum, J. A. Raven, R. C. Leegood, How do marine diatoms fix 10 billion tonnes of inorganic carbon per year? *Can. J. Bot.* **83**, 898–908 (2005).
5. J. A. Raven, J. Beardall, M. Giordano, Energy costs of carbon dioxide concentrating mechanisms in aquatic organisms. *Photosynth. Res.* **121**, 111–124 (2014).
6. S. C. Maberly, B. Gontero, Ecological imperatives for aquatic CO₂-concentrating mechanisms. *J. Exp. Bot.* **68**, 3797–3814 (2017).
7. C. B. Field, M. J. Behrenfeld, J. T. Randerson, P. Falkowski, Primary production of the biosphere: Integrating terrestrial and oceanic components. *Science* **281**, 237–240 (1998).
8. J. H. Hennacy, M. C. Jonikas, Prospects for engineering biophysical CO₂ concentrating mechanisms into land plants to enhance yields. *Annu. Rev. Plant Biol.* **71**, 461–485 (2020).
9. B. D. Engel, M. Schaffer, L. Kuhn Cuellar, E. Villa, J. M. Plitzko, W. Baumeister, Native architecture of the *Chlamydomonas* chloroplast revealed by in situ cryo–electron tomography. *eLife* **4**, e04889 (2015).
10. M. T. Meyer, C. Whittaker, H. Griffiths, The algal pyrenoid: Key unanswered questions. *J. Exp. Bot.* **68**, 3739–3749 (2017).
11. J. D. Pickett-Heaps, *Green Algae: Structure, Reproduction and Evolution in Selected Genera* (Sinauer Associates, 1975).
12. C. Toyokawa, T. Yamano, H. Fukuzawa, Pyrenoid starch sheath is required for LCIB localization and the CO₂-concentrating mechanism in green algae. *Plant Physiol.* **182**, 1883–1893 (2020).
13. L. C. M. Mackinder, M. T. Meyer, T. Mettler-Altmann, V. K. Chen, M. C. Mitchell, O. D. Caspari, E. S. Freeman Rosenzweig, L. Pallesen, G. Reeves, A. K. Itakura, R. Roth, F. Sommer, S. Geimer, T. Mühlhaus, M. Schroda, U. W. Goodenough, M. Stitt, H. Griffiths, M. C. Jonikas, A repeat protein links rubisco to form the eukaryotic carbon-concentrating organelle. *Proc. Natl. Acad. Sci. U.S.A.* **113**, 5958–5963 (2016).
14. A. K. Itakura, K. X. Chan, N. Atkinson, L. Pallesen, L. Wang, G. Reeves, W. Patena, O. D. Caspari, R. Roth, U. W. Goodenough, A. J. McCormick, H. Griffiths, M. C. Jonikas, A Rubisco-binding protein is required for normal pyrenoid number and starch sheath morphology in *Chlamydomonas reinhardtii*. *Proc. Natl. Acad. Sci. U.S.A.* **116**, 18445–18454 (2019).
15. E. S. Freeman Rosenzweig, B. Xu, L. Kuhn Cuellar, A. Martinez-Sanchez, M. Schaffer, M. Strauss, H. N. Cartwright, P. Ronceray, J. M. Plitzko, F. Förster, N. S. Wingreen, B. D. Engel, L. C. M. Mackinder, M. C. Jonikas, The eukaryotic CO₂-concentrating organelle is liquid-like and exhibits dynamic reorganization. *Cell* **171**, 148–162.e19 (2017).
16. T. Wunder, S. L. H. Cheng, S.-K. Lai, H.-Y. Li, O. Mueller-Cajar, The phase separation underlying the pyrenoid-based microalgal Rubisco supercharger. *Nat. Commun.* **9**, 5076 (2018).
17. Y. Zhan, C. H. Marchand, A. Maes, A. Mauries, Y. Sun, J. S. Dhaliwal, J. Uniacke, S. Arragain, H. Jiang, N. D. Gold, V. J. J. Martin, S. D. Lemaire, W. Zerges, Pyrenoid functions revealed by proteomics in *Chlamydomonas reinhardtii*. *PLoS ONE* **13**, e0185039 (2018).
18. L. C. M. Mackinder, C. Chen, R. D. Leib, W. Patena, S. R. Blum, M. Rodman, S. Ramundo, C. M. Adams, M. C. Jonikas, A spatial interactome reveals the protein organization of the algal CO₂-concentrating mechanism. *Cell* **171**, 133–147.e14 (2017).
19. M. E. Baker, W. N. Grundy, C. P. Elkan, Spinach CSP41, an mRNA-binding protein and ribonuclease, is homologous to nucleotide-sugar epimerases and hydroxysteroid dehydrogenases. *Biochem. Biophys. Res. Commun.* **248**, 250–254 (1998).
20. N. Atkinson, C. N. Velanis, T. Wunder, D. J. Clarke, O. Mueller-Cajar, A. J. McCormick, The pyrenoid linker protein EPYC1 phase separates with hybrid *Arabidopsis*–*Chlamydomonas* Rubisco through interactions with the algal rubisco small subunit. *J. Exp. Bot.* **70**, 5271–5285 (2019).
21. S. He, H. T. Chou, D. Matthies, T. Wunder, M. T. Meyer, N. Atkinson, A. Martinez-Sanchez, P. D. Jeffrey, S. A. Port, W. Patena, G. He, V. K. Chen, F. M. Hughson, A. J. McCormick, O. Mueller-Cajar, B. D. Engel, Z. Yu, M. C. Jonikas, The structural basis of rubisco phase separation in the pyrenoid. [bioRxiv 2020.08.16.252809](https://doi.org/10.1101/2020.08.16.252809) [Preprint]. 16 August 2020. <https://doi.org/10.1101/2020.08.16.252809>.
22. S. F. Banani, A. M. Rice, W. B. Peeples, Y. Lin, S. Jain, R. Parker, M. K. Rosen, Compositional control of phase-separated cellular bodies. *Cell* **166**, 651–663 (2016).
23. J.-M. Choi, A. S. Holehouse, R. V. Pappu, Physical principles underlying the complex biology of intracellular phase transitions. *Annu. Rev. Biophys.* **49**, 107–133 (2020).
24. E. W. Martin, A. S. Holehouse, I. Peran, M. Farag, J. J. Incicco, A. Bremer, C. R. Grace, A. Soranno, R. V. Pappu, T. Mittag, Valence and patterning of aromatic residues determine the phase behavior of prion-like domains. *Science* **367**, 694–699 (2020).
25. N. A. Pronina, V. E. Semenenko, Localization of membrane bound and soluble carbonic anhydrase in the Chlorella cell. *Fiziol. Rastenii* **31**, 241–251 (1984).
26. J. A. Raven, CO₂-concentrating mechanisms: A direct role for thylakoid lumen acidification? *Plant Cell Environ.* **20**, 147–154 (1997).
27. U. W. Goodenough, R. P. Levine, Chloroplast structure and function in *ac-20*, a mutant strain of *Chlamydomonas reinhardtii*. 3. Chloroplast ribosomes and membrane organization. *J. Cell Biol.* **44**, 547–562 (1970).
28. O. D. Caspari, M. T. Meyer, D. Tolleter, T. M. Wittkopp, N. J. Cunniffe, T. Lawson, A. R. Grossman, H. Griffiths, Pyrenoid loss in *Chlamydomonas reinhardtii* causes limitations in CO₂ supply, but not thylakoid operating efficiency. *J. Exp. Bot.* **68**, 3903–3913 (2017).
29. A. Mukherjee, C. S. Lau, C. E. Walker, A. K. Rai, C. I. Prejean, G. Yates, T. Emrich-Mills, S. G. Lemoine, D. J. Vinyard, L. C. M. Mackinder, J. V. Moroney, Thylakoid localized bestrophin-like proteins are essential for the CO₂ concentrating mechanism of *Chlamydomonas reinhardtii*. *Proc. Natl. Acad. Sci. U.S.A.* **116**, 16915–16920 (2019).
30. J. C. Villarreal, S. S. Renner, Hornwort pyrenoids, carbon-concentrating structures, evolved and were lost at least five times during the last 100 million years. *Proc. Natl. Acad. Sci. U.S.A.* **109**, 18873–18878 (2012).
31. J. A. Raven, J. Beardall, P. Sánchez-Baracaldo, The possible evolution and future of CO₂-concentrating mechanisms. *J. Exp. Bot.* **68**, 3701–3716 (2017).
32. H. Griffiths, M. T. Meyer, R. E. M. Rickaby, Overcoming adversity through diversity: Aquatic carbon concentrating mechanisms. *J. Exp. Bot.* **68**, 3689–3695 (2017).
33. M. D. Herron, J. D. Hackett, F. O. Aylward, R. E. Michod, Triassic origin and early radiation of multicellular volvocine algae. *Proc. Natl. Acad. Sci. U.S.A.* **106**, 3254–3258 (2009).
34. M. T. Meyer, T. Genkov, J. N. Skepper, J. Jouhet, M. C. Mitchell, R. J. Spreitzer, H. Griffiths, Rubisco small-subunit α -helices control pyrenoid formation in *Chlamydomonas*. *Proc. Natl. Acad. Sci. U.S.A.* **109**, 19474–19479 (2012).
35. B. D. Rae, B. M. Long, B. Förster, N. D. Nguyen, C. N. Velanis, N. Atkinson, W. Y. Hee, B. Mukherjee, G. D. Price, A. J. McCormick, Progress and challenges of engineering a biophysical CO₂-concentrating mechanism into higher plants. *J. Exp. Bot.* **68**, 3717–3737 (2017).
36. L. C. M. Mackinder, The *Chlamydomonas* CO₂-concentrating mechanism and its potential for engineering photosynthesis in plants. *New Phytol.* **217**, 54–61 (2018).
37. R. Zhang, W. Patena, U. Armbruster, S. S. Gang, S. R. Blum, M. C. Jonikas, High-throughput genotyping of green algal mutants reveals random distribution of mutagenic insertion sites and endonucleolytic cleavage of transforming DNA. *Plant Cell* **26**, 1398–1409 (2014).
38. J. Kropat, A. Hong-Hermesdorf, D. Casero, P. Ent, M. Castruita, M. Pellegrini, S. S. Merchant, D. Malasarn, A revised mineral nutrient supplement increases biomass and growth rate in *Chlamydomonas Reinhardtii*. *Plant J.* **66**, 770–780 (2011).
39. M. C. Mitchell, M. T. Meyer, H. Griffiths, Dynamics of carbon-concentrating mechanism induction and prot ein relocalization during the dark-to-light transition in synchronized *Chlamydomonas reinhardtii*. *Plant Physiol.* **166**, 1073–1082 (2014).
40. D. Strenkert, S. Schmollinger, S. D. Gallaher, P. A. Salomé, S. O. Purvine, C. D. Nicora, T. Mettler-Altmann, E. Soubeyrand, A. P. M. Weber, M. S. Lipton, G. J. Basset, S. S. Merchant, Multiomics resolution of molecular events during a day in the life of *Chlamydomonas*. *Proc. Natl. Acad. Sci. U.S.A.* **116**, 2374–2383 (2019).
41. R. J. Porra, W. A. Thompson, P. E. Kriedemann, Determination of accurate extinction coefficients and simultaneous equations for assaying chlorophylls a and b extracted with four different solvents: Verification of the concentration of chlorophyll standards by atomic absorption spectroscopy. *Biochim. Biophys. Acta Bioenerg.* **975**, 384–394 (1989).
42. K. Hilpert, D. F. H. Winkler, R. E. W. Hancock, Peptide arrays on cellulose support: SPOT synthesis, a time and cost efficient method for synthesis of large numbers of peptides in a parallel and addressable fashion. *Nat. Protoc.* **2**, 1333–1349 (2007).
43. J. Schindelin, I. Arganda-Carreras, E. Frise, V. Kaynig, M. Longair, T. Pietzsch, S. Preibisch, C. Rueden, S. Saalfeld, B. Schmid, J.-Y. Tinevez, D. J. White, V. Hartenstein, K. Eliceiri, P. Tomancak, A. Cardona, Fiji: An open-source platform for biological-image analysis. *Nat. Methods* **9**, 676–682 (2012).
44. One Thousand Plant Transcriptomes Initiative, One thousand plant transcriptomes and the phylogenomics of green plants. *Nature* **574**, 679–685 (2019).
45. F. Madeira, Y. M. Park, J. Lee, N. Buso, T. Gur, N. Madhusoodanan, P. Basutkar, A. R. N. Tivey, S. C. Potter, R. D. Finn, R. Lopez, The EMBL-EBI search and sequence analysis tools APIs in 2019. *Nucleic Acids Res.* **47**, W636–W641 (2019).
46. E. Gasteiger, A. Gattiker, C. Hoogland, I. Ivanyi, R. D. Appel, A. Bairoch, ExPASy: The proteomics server for in-depth protein knowledge and analysis. *Nucleic Acids Res.* **31**, 3784–3788 (2003).
47. L. A. Kelley, S. Mezulis, C. M. Yates, M. N. Wass, M. J. E. Sternberg, The Phyre2 web portal for protein modeling, prediction and analysis. *Nat. Protoc.* **10**, 845–858 (2015).
48. K. Hofmann, W. Stoffel, TMBase—A database of membrane spanning proteins segments. *Biol. Chem.* **374**, 166 (1993).
49. T. Yang, Q. Liu, B. Kloss, R. Bruni, R. C. Kalathur, Y. Guo, E. Kloppmann, B. Rost, H. M. Colecraft, W. A. Hendrickson, Structure and selectivity in bestrophin ion channels. *Science* **346**, 355–359 (2014).
50. M. Terashima, M. Specht, M. Hippler, The chloroplast proteome: A survey from the *Chlamydomonas reinhardtii* perspective with a focus on distinctive features. *Curr. Genet.* **57**, 151–168 (2011).
51. B. Mészáros, G. Erdős, Z. Dosztányi, IUPred2A: Context-dependent prediction of protein disorder as a function of redox state and protein binding. *Nucleic Acids Res.* **46**, W329–W337 (2018).
52. M. Tardif, A. Atteia, M. Specht, G. Cogne, N. Rolland, S. Brugière, M. Hippler, M. Ferro, C. Bruley, G. Peltier, O. Vallon, L. Courmac, PredAlgo: A new subcellular localization prediction tool dedicated to green algae. *Mol. Biol. Evol.* **29**, 3625–3639 (2012).

Acknowledgments: We thank C. Dupont (JCVI, La Jolla, CA), as well as present members and alumni of the Jonikas laboratory for discussions and feedback on the manuscript; the Princeton University Confocal Microscopy and Biophysics core facility managers G. Laevsky and V. Gopal Vandavasi for instrumentation support; and R. Leib and C. Adams at the Stanford University Mass Spectrometry facility. **Funding:** The project was funded by NSF (IOS-1359682 and MCB-1935444), NIH (DP2-GM-119137), and Simons Foundation and Howard Hughes Medical Institute (55108535) grants to M.C.J., and the UK Biotechnology and Biological Sciences Research Council (BB/R001014/1) grant to L.C.M.M. The content is solely the responsibility of the authors and does not necessarily represent the official views of the NIH. **Author contributions:** M.T.M., A.K.I., and M.C.J. conceived the project. A.K.I. performed the coimmunoprecipitation experiment and prepared samples for analysis by mass spectrometry. M.T.M. purified Rubisco and performed Western blots, surface plasmon resonance, protein relocalization experiments, and confocal microscopy. S.H. and M.T.M. performed the peptide tiling array experiment. T.E.-M., C.S.L., G.Y., L.W., M.T.M., and L.C.M.M. produced fluorescently tagged strains. W.P. conducted the bioinformatic analyses. All authors analyzed the data. M.T.M. and M.C.J. wrote the manuscript with input from all authors. M.C.J. supervised the work.

Competing interests: Princeton University, Stanford University, and the University of York have submitted a provisional patent application on aspects of the findings. These applications were submitted to two patent offices: PCT (no. PCT/US2020/044326, filed on 30 July 2020, priority date: 2 August 2019) and Argentina (no. P200102163, filed on 31 July 2020). The authors declare no other competing interests. **Data and materials availability:** All data needed to evaluate the conclusions in the paper are present in the paper and/or the Supplementary Materials. Additional data related to this paper may be requested from the authors.

Submitted 9 June 2020
Accepted 25 September 2020
Published 11 November 2020
10.1126/sciadv.abd2408

Citation: M. T. Meyer, A. K. Itakura, W. Patena, L. Wang, S. He, T. Emrich-Mills, C. S. Lau, G. Yates, L. C. M. Mackinder, M. C. Jonikas, Assembly of the algal CO₂-fixing organelle, the pyrenoid, is guided by a Rubisco-binding motif. *Sci. Adv.* **6**, eabd2408 (2020).

Assembly of the algal CO₂-fixing organelle, the pyrenoid, is guided by a Rubisco-binding motif

Moritz T. Meyer, Alan K. Itakura, Weronika Patena, Lianyong Wang, Shan He, Tom Emrich-Mills, Chun S. Lau, Gary Yates, Luke C. M. Mackinder and Martin C. Jonikas

Sci Adv 6 (46), eabd2408.
DOI: 10.1126/sciadv.abd2408

ARTICLE TOOLS

<http://advances.sciencemag.org/content/6/46/eabd2408>

SUPPLEMENTARY MATERIALS

<http://advances.sciencemag.org/content/suppl/2020/11/09/6.46.eabd2408.DC1>

REFERENCES

This article cites 50 articles, 14 of which you can access for free
<http://advances.sciencemag.org/content/6/46/eabd2408#BIBL>

PERMISSIONS

<http://www.sciencemag.org/help/reprints-and-permissions>

Use of this article is subject to the [Terms of Service](#)

Science Advances (ISSN 2375-2548) is published by the American Association for the Advancement of Science, 1200 New York Avenue NW, Washington, DC 20005. The title *Science Advances* is a registered trademark of AAAS.

Copyright © 2020 The Authors, some rights reserved; exclusive licensee American Association for the Advancement of Science. No claim to original U.S. Government Works. Distributed under a Creative Commons Attribution NonCommercial License 4.0 (CC BY-NC).

Supplementary Materials for

Assembly of the algal CO₂-fixing organelle, the pyrenoid, is guided by a Rubisco-binding motif

Moritz T. Meyer, Alan K. Itakura, Weronika Patena, Lianyong Wang, Shan He, Tom Emrich-Mills, Chun S. Lau, Gary Yates, Luke C. M. Mackinder, Martin C. Jonikas*

*Corresponding author. Email: mjonikas@princeton.edu

Published 11 November 2020, *Sci. Adv.* **6**, eabd2408 (2020)
DOI: [10.1126/sciadv.abd2408](https://doi.org/10.1126/sciadv.abd2408)

The PDF file includes:

Figs. S1 to S9
Legends for tables S1 and S2
References

Other Supplementary Material for this manuscript includes the following:

(available at advances.sciencemag.org/cgi/content/full/6/46/eabd2408/DC1)

Tables S1 and S2

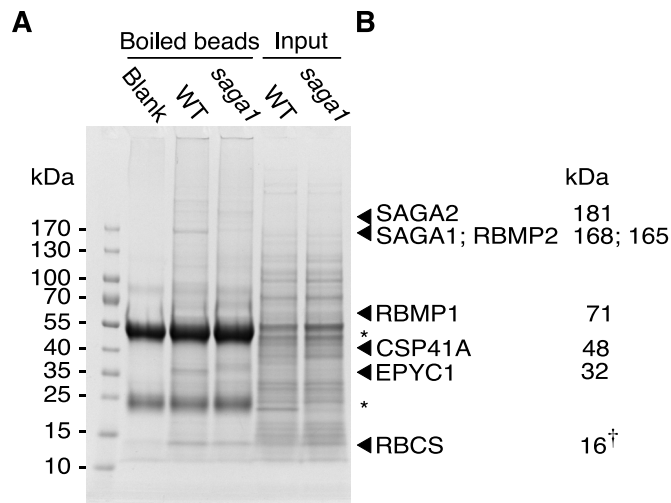


Fig. S1. A polyclonal antibody raised against the pyrenoid protein SAGA1 interacts with at least five other pyrenoid proteins.

(A) Coomassie-stained gel from the anti-SAGA1 immunoprecipitation experiment. First three lanes (identical to Fig. 1D): boiled beads alone (Blank), boiled beads after immunoprecipitation from wild-type (WT) and *saga1* lysates, respectively. The small and large chains of immunoglobulins used in the assay are labelled (*). Last two lanes: cell lysate input into immunoprecipitation experiment. (B) Calculated molecular weight (MW) of immunoprecipitated pyrenoid proteins based on the full-length sequence (46), except for RBCS (†) for which the sequence of the mature protein is known. The MW was not adjusted for predicted chloroplast transit peptides.

A

SAGA1 192 SDPPAP PPHSSSTAA AAAAATDVLFLVGS CP E L G E M D P G R A I K L A A V A G --- G G W A
 SAGA2 P P P P --- G S P E P V P V L T G S A A E L G A W E P S Q G V P L R R D P G A A --- G C E T
 At2g40840 Q D D S V V V Q F --- K I C C P D I C E G T S V Y V I G T I P E K L G N W K V E N G L R I N Y V D D --- S I W E
 1KUL T P T A V A V T F --- D L - T A T T T Y G E N I Y L V G S I S Q L G D W E T S D G I A L S A D K Y T S S D P L W Y
 1CYG T N D Q V S V R F --- V V N N A T T N L G Q N I Y I V G N V Y E L G N W D T S K A I G P M E N Q V V Y S Y P T W Y

SAGA1 246 A E A R L E L E S E - V A A K L L I M --- R D G T R M E W E L G P N R V L R G A L T A A A A Q P G T G A P P P R A
 SAGA2 A R A A L R M D R Q P L N A K L V L V A A G A G A A G T T A V W E E G A D R V L G H A T N --- P A A G P D R M
 At2g40840 A D C L I P K A D F P I K Y R Y C K V --- Q K E D S I G F E S G G N R E L S L H S I C S K Q E Y I --- V M S D G
 1KUL V T V I L P A - G E S E E Y K F I R I --- E S D D E V E W E S D P N R E Y T V P Q A C G T --- S T
 1CYG I D V S V P E - G K I I E F K F I K K --- D S Q G N V T W E S G S N H V Y T T P T N T --- T

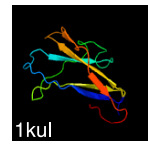
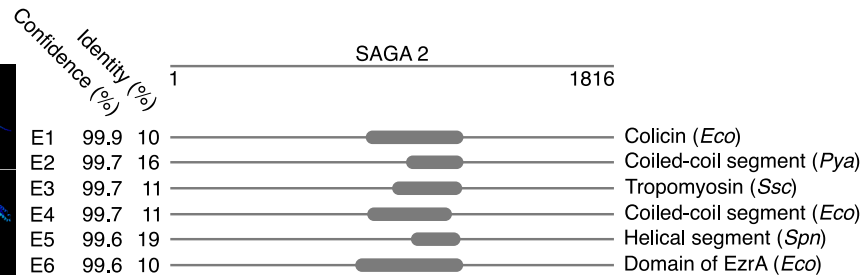
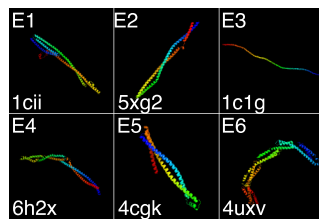
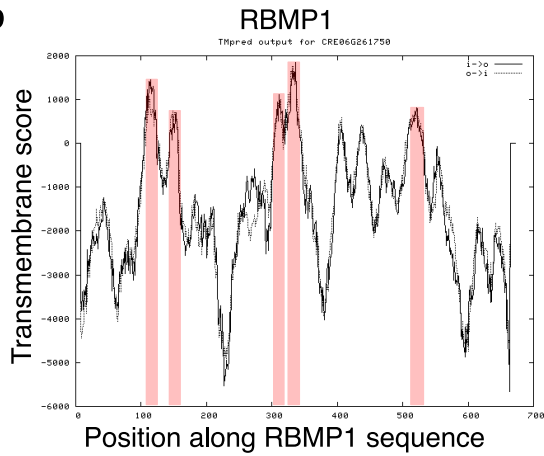
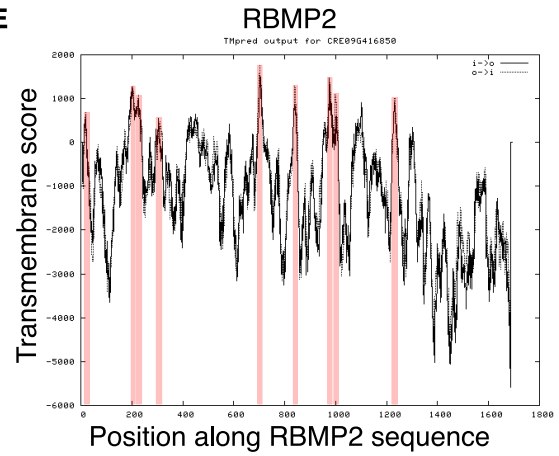
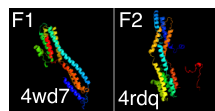
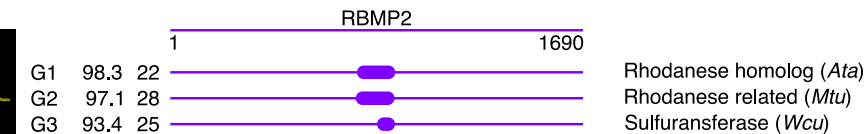
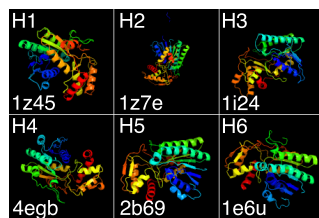
B**C****D****E****F****G****H**

Fig. S2. Predicted functional annotation of pyrenoid proteins immunoprecipitated by the anti-SAGA1 antibody. (A) SAGA1 and SAGA2 contain a predicted starch binding domain (belonging to the ubiquitous CBM20 family). Conserved residues predicted to be involved in starch recognition are highlighted (magenta). Numbering is for SAGA1. The partial alignment around the starch binding domain includes examples spanning the entire tree of life: a land plant (*Arabidopsis thaliana*, At2g40840), a fungus (*Aspergillus niger*, 1kul) and a Gram+ bacterium (*Geobacillus stearothermophilus*, 1cyg). (B) Crystal structures of two starch binding domains from (A). (C) Predicted regions of structural similarity between SAGA2 and experimentally determined protein structure data deposited in the Protein Data Bank (47). Six predicted structures are shown alongside PDB template ID, confidence and identity percentages. The position of a predicted functional domain is shown along the protein length of SAGA2 (to scale). Abbreviations: *Eco* (*Escherichia coli*), *Pya* (*Pyrococcus yayanosii*), *Ssc* (*Sus scrofa*), *Spn* (*Streptococcus pneumoniae*). (D) Predicted transmembrane domains in RBMP1 (48). Bestrophins are calcium-activated ion channels that assemble as homo-tetramers or homo-pentamers (29, 49). (E) Predicted transmembrane domains in RBMP2 (48). (F to H) Predicted regions of structural similarity between RBMP1 (F), RBMP2 (G), and CSP41A (H) with data deposited in PDB, as for (C), above. Abbreviations: *Kpn* (*Klebsiella pneumoniae*), *Gga* (*Gallus gallus*), *Ath* (*Arabidopsis thaliana*), *Mtu* (*Mycobacterium tuberculosis*), *Wsu* (*Wolinella succinogenes*), *Scv* (*Saccharomyces cerevisiae*), *Ban* (*Bacillus anthracis*), *Hsa* (*Homo sapiens*).

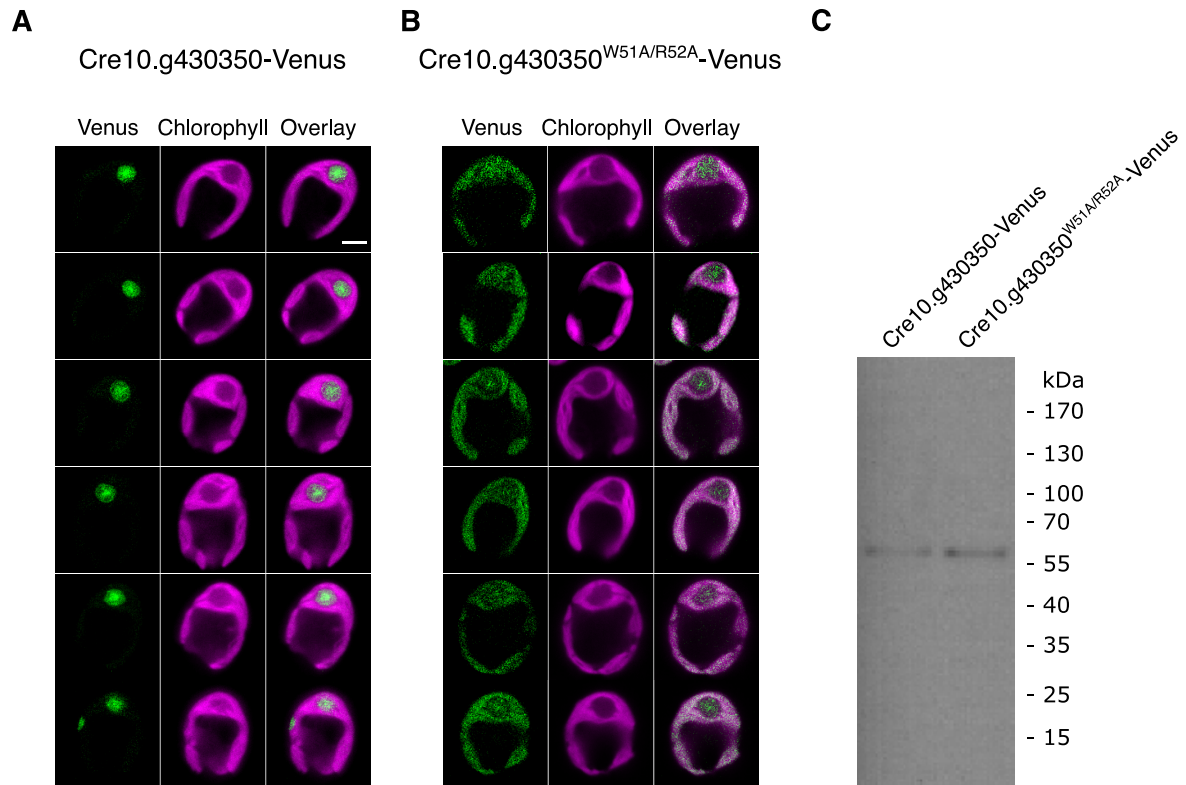


Fig. S3. Subcellular localization of Cre10.g430350. (A) Supplementary confocal images of the native localization of Venus-tagged Cre10.g430350. Scale bar, 2 μ m. (B) Supplementary confocal images of Venus-tagged Cre10.g430350 with mutations W51A and R52A. (C) Anti-FLAG western blot validation of full-length expression of proteins tagged with Venus-3xFLAG.

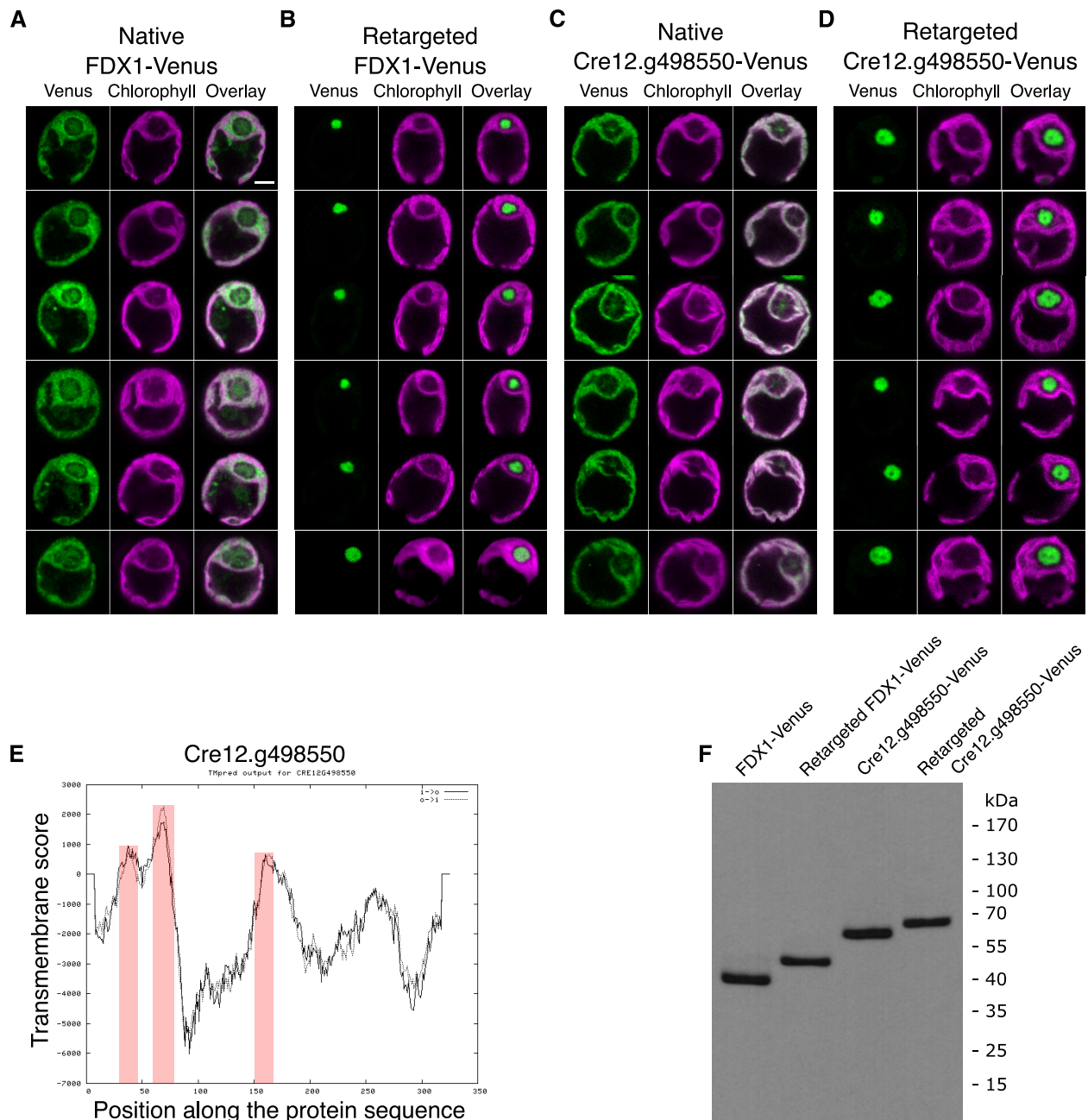


Fig. S4. Subcellular localization of native and pyrenoid-retargeted chloroplast proteins. (A) Supplementary confocal images of the native localization of Venus-tagged ferredoxin 1 protein (FDX1). Scale bar, 2 μ m. (B) Supplementary confocal images of FDX1-Venus with the C-terminal addition of three copies of the C-terminal SAGA2 motif. (C) Confocal images of the native localization of Venus-tagged Cre12.g498550, an uncharacterized chloroplast protein homologous to a Viridiplantae conserved magnesium protoporphyrin methyl-transferase involved in

tetrapyrrole metabolism. **(D)** Confocal images of Cre12.g498550-Venus with the C-terminal addition of three copies of the C-terminal SAGA2 motif. **(E)** Predicted transmembrane domains of Cre12.g498550 (48). **(F)** Anti-FLAG western blot validation of full-length expression of proteins tagged with Venus-3xFLAG.

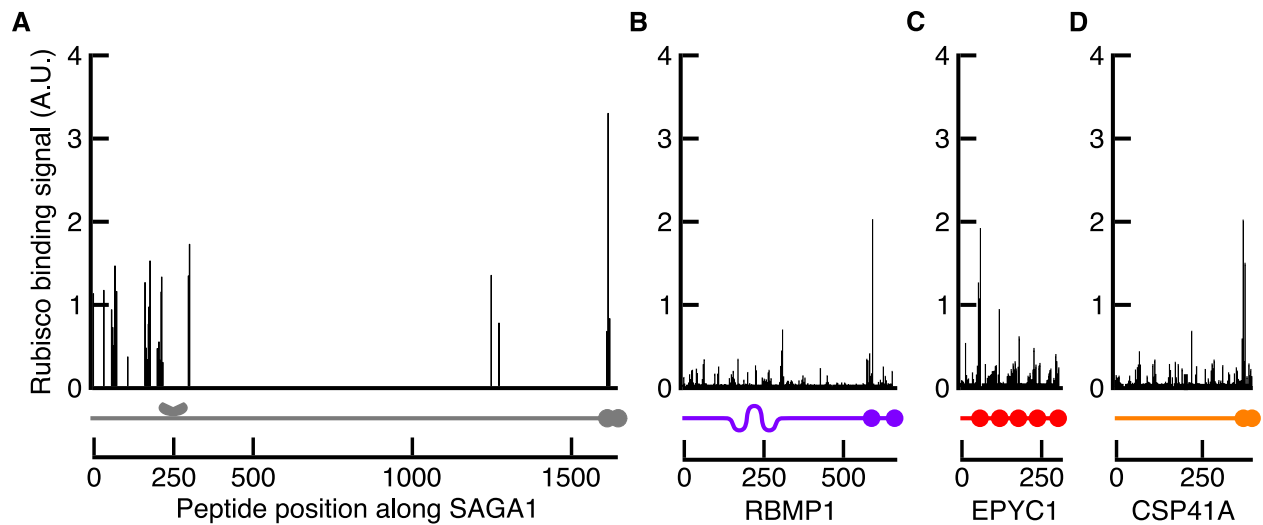


Fig. S5. Rubisco-binding measured by peptide array. (A) Array of 18-amino-acid peptides tiling across the sequence of SAGA1, (B) RBMP1, (C) EPYC1, and (D) CSP41A. Arrays were synthesized and probed with Rubisco. Binding signal is normalized to a control EPYC1 peptide (same as for Fig. 3B and 3C, corresponding to one unit of binding). The positions of the predicted motifs are indicated to scale below each graph. The peptide corresponding to the C-terminus does not accurately represent the Rubisco-binding motif in this assay, as the peptides are linked to the cellulose via their C-termini, eliminating the carboxyl group which appears to be important for binding to Rubisco (based on the observation that internal instances of the motif are typically followed by an aspartic or glutamic acid, each of which carries a carboxyl group). The binding response was quantified by summing all the pixel intensities in a constant circular region centered on each dot on the peptide array.

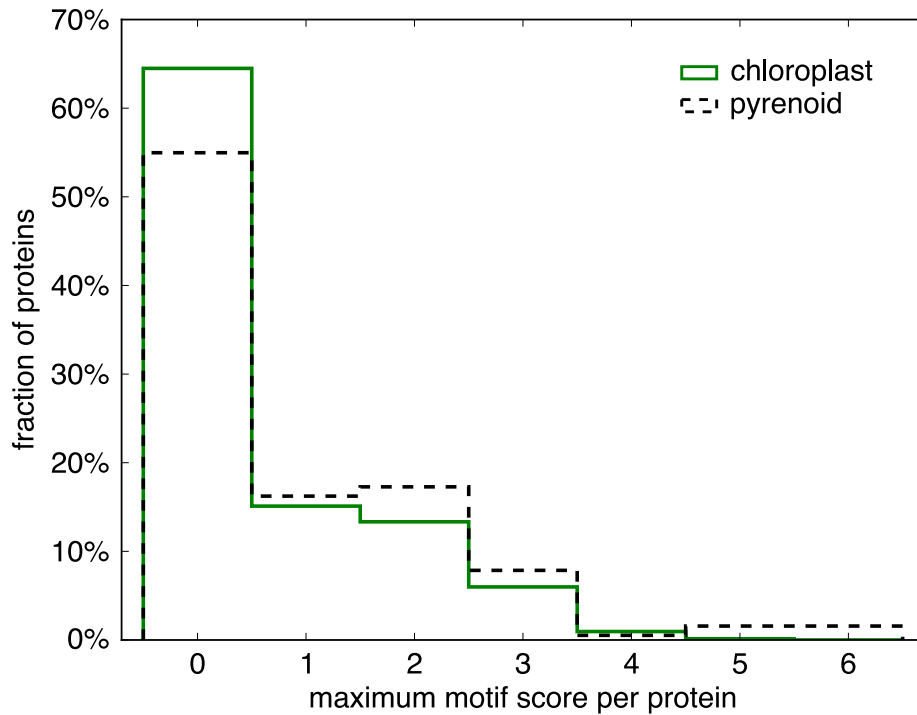


Fig. S6. High motif scores were modestly enriched among pyrenoid proteome proteins relative to predicted chloroplast-targeted proteins. The fraction of proteins with each motif score is shown. Pyrenoid: proteins found in the pyrenoid proteome (17). Chloroplast: proteins found in the chloroplast proteome (50) excluding proteins found in the pyrenoid proteome (see Supplementary Table S2). The pyrenoid proteome has a distribution of motif scores that is shifted toward higher scores ($p = 0.047$ after excluding the six proteins used to define the motif [EPYC1, SAGA1, SAGA2, RBMP1, RBMP2, CSP41A]; $p = 0.0066$ otherwise).

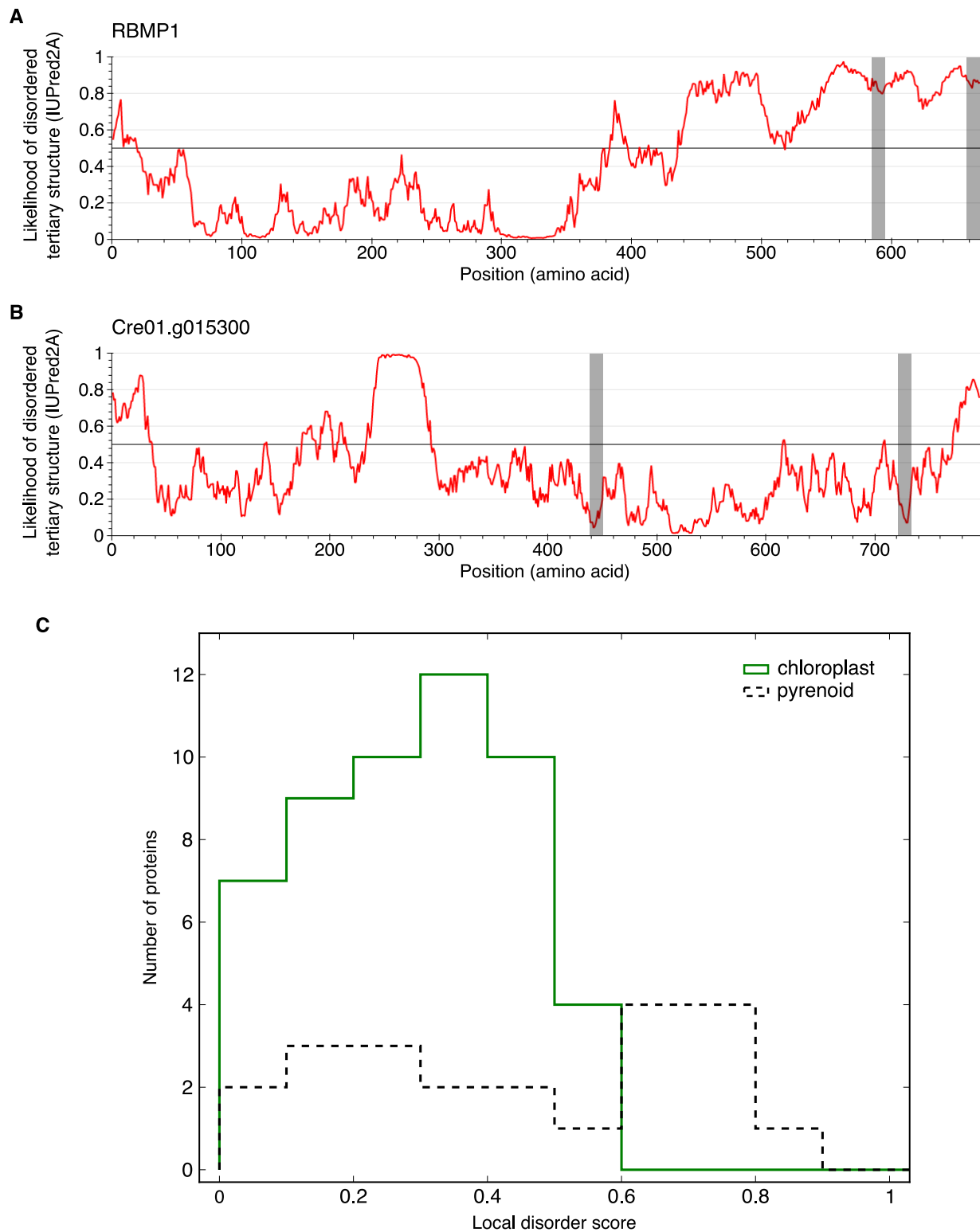


Fig. S7. The motifs of pyrenoid-localized proteins are more frequently situated in disordered regions compared with the motifs of other chloroplast proteins. (A) The likelihood of

disordered tertiary structure as predicted by IUPred2 (51) was plotted as a function of amino acid position along the length of the pyrenoid-localized protein RBMP1. Each grey bar highlights an 11-amino acid region centered on the tryptophan of a Rubisco-binding motif, in which the plotted values were averaged to obtain a “local disorder score”, reflecting the likelihood that this motif is in a disordered region. **(B)** For illustration purposes, the same analysis is shown for the non-pyrenoid chloroplast protein Cre01.g015300. **(C)** The analysis was repeated for proteins found in the pyrenoid proteome (17) and/or the chloroplast proteome (44). Only motifs with scores of 3 or greater (relatively high similarity to validated Rubisco-binding sequences) were considered. When multiple such motifs were found in the same protein, their average score was used for that protein. The number of proteins with each local disorder score is shown, for either the proteins found in the pyrenoid proteome (“pyrenoid”) or proteins found in the chloroplast proteome excluding proteins found in the pyrenoid proteome (“chloroplast”) (scores are shown in Supplementary Table S2). Proteins in the pyrenoid proteome have a bimodal distribution of motif-localization disorder scores, with a peak shifted towards higher scores, and the distributions have different means (Welch’s t-test $p = 0.007$).

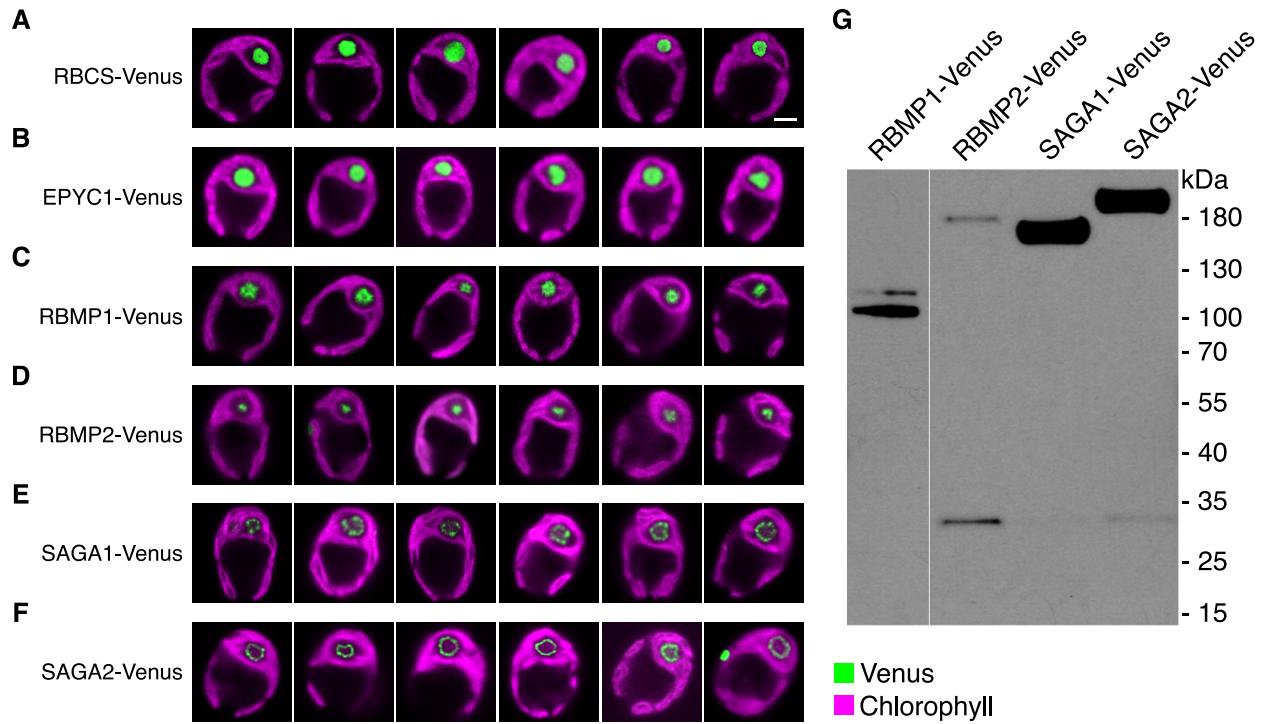


Fig. S8. Subcellular localization of native pyrenoid proteins. (A) to (F), Supplementary confocal images of the native localization of Venus-tagged RBMP1, RBMP2, SAGA1, SAGA2, EPYC1, and RBCS1, respectively. Chlorophyll autofluorescence delimits the chloroplast. Scale bar, 2 μ m. (G) Anti-FLAG western blot validation of full-length expression of proteins tagged with Venus-3xFLAG: RBMP1 ~99kDa, RBMP2 ~199kDa, SAGA1 ~191kDa, SAGA2 ~212kDa. For RBCS1-Venus and EPYC1-Venus, see (18).

A

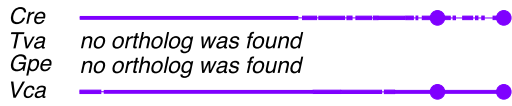
SAGA1 N-  -C



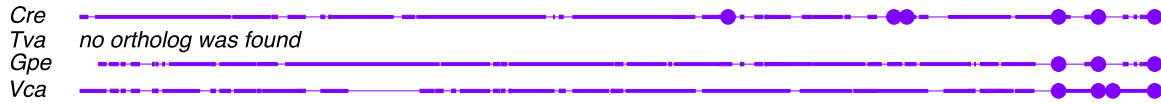
SAGA2 N-  -C



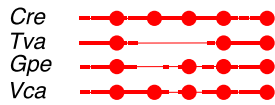
RBMP1 N-  -C



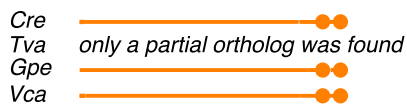
RBMP2 N-  -C



EPYC1 N-  -C



CSP41A N-  -C



B

SAGA1 (1/4)

Cre Cre11.g467712.t1.1 -----MSTAWLPGRPACGRLLVPGRSASAVLLGHRMLGTRRLAWSPPGCGHLGTS
Tva PNH05753.1 -----MSSELE
Gpe KXZ43034.1 -----
Vca Vocar.0009s0363.1.p MANHQVLRPQAGHIAIGRAHLACGILLPSRPAAPQAGVRFARSPQCPLRSWGLSGCDPA

Cre Cre11.g467712.t1.1 RSRTVTLLGLLL-LPRPAPAAA-----AVAASAAAAAGCSGFPAGSRASGGGYS
Tva PNH05753.1 LETSVVLQGASTENPQPSSKDT-----AASSASVNGGKGLATTDSA-----
Gpe KXZ43034.1 -----MT-HVKPAVSSS-----AAAAAA-----LEKELA-----
Vca Vocar.0009s0363.1.p FMRALGCSGAVW-RGGPGATTRLPRRRIQLPMAPCALSGNRSGFPSMPPSRIV-----A
* . * . : . .

Cre Cre11.g467712.t1.1 SSSSSSSNSAGHGLARPAGGRAPRAGKGRGLPVAAAAGGGDSADGGGVTTAQASMNGAG
Tva PNH05753.1 -----
Gpe KXZ43034.1 -----
Vca Vocar.0009s0363.1.p SKASSDDEAASSSLAAAAASASTPGGGIGGTVAVVKDAGERGALSVNGATAGSSTSESS

Cre Cre11.g467712.t1.1 ASSSRGTAAAPSSSSPPTTPSAFTLCRFVVPSPDPPAPLPHPSSSTAAAAAATDVLFLL
Tva PNH05753.1 -----STSQAASAPAPEAPQPPPTLCRITVPGDPAVPI-----DAATQQLRL
Gpe KXZ43034.1 -----ATVAAAVVPPPS-----
Vca Vocar.0009s0363.1.p VQAAD--AASSSHKNGSGASAGGGRTRCRIVVPEYPPVPL-----TTDPWVTQRLLL
: : . .

Cre Cre11.g467712.t1.1 VGSCPELGEWDPGRALKLAAVAGGGWAAEARLELESEVAAKLLIMR-DGT--RMEWELGP
Tva PNH05753.1 VGSCRELGEWDPGRGLGLTATTGGWAADVLSIEAEVTAKLLIVSSAV--DFEWEAGA
Gpe KXZ43034.1 -----VKATAV--S-----
Vca Vocar.0009s0363.1.p VGSCRELGEWDPGRAPVLEPADVGGWAVDLDLQSDVAAKLLVLRGEGPERSVEWENG
: .

Cre Cre11.g467712.t1.1 NRVLRGALTAATAAQPGTGAPPRALLFSCPWNQPDNTRIELEAAQLPPLQPAVPAAAAA
Tva PNH05753.1 NRVV-----APYSGSRLLVACPWSRPEDTRVQE--ADTLPPQLPRPP---PA
Gpe KXZ43034.1 -----PQAG---AP
Vca Vocar.0009s0363.1.p NRVF-----SSYKGSKALIMECPWGQPEQTVRLEIAATQLPTLRSRQPQPPP
. . . .

Cre Cre11.g467712.t1.1 APPPKAAAPPPPPAAGAAP-----GG-----VQVN
Tva PNH05753.1 AQPPAASSRRGLGGAGSRGGTPWKPTGAG-----VQLD
Gpe KXZ43034.1 GQPSSSPGAAAAGAAAGAAQ-QLPRSAAGAA-----VQVN
Vca Vocar.0009s0363.1.p QPQVQQKERSGSGAGGSSA---PSTPAAGSSTVPGPAKTAGPAKTPTGKPTLPTVQVR
..*:: .. **: .

Cre Cre11.g467712.t1.1 TTELRLKQKLTAQIADLQQSGASAAAGRQAAAGAAAAAAAAAAGAGAARPAAGGAT
Tva PNH05753.1 TSELRLKQLKLAQITELQTTTSQ----KEQKPGAAAGSPAAPPASAG--RPAGAAGS
Gpe KXZ43034.1 TAELRLKQQLTAQIAELQTGGTPL---PISPPPAAGAAAAPTAAALHSTTAAGAVG
Vca Vocar.0009s0363.1.p TDELQKVRQMISTKIGELEG-----RAAAAGQAASKSPAPTQPPGSARTQPRSGGGG
* **.*. ::::* :* . **.*. . . :*

Cre Cre11.g467712.t1.1 AAALAA-----DGELQRLTAQLQSVSAQLETTMTEMASARAAVVAKERAMAELEERLA
Tva PNH05753.1 PPRGDBGASPSADAGELVRLTSQLQSVSSQLDLTLAEMAAARAAVVAKERAVAELEERLA
Gpe KXZ43034.1 AVPAGGGS-----ADEVARLASQLQAVSSQLDRTAADMAAARAAVVAKERAVAELEERLA
Vca Vocar.0009s0363.1.p GAAAAS-AVPTADPSEIQRLASQLQNVNAQLELTVAEEMAAARAAVAAKERAVAEEMEERLN
. . .*:*:*:* *.*:* * :*:**:* ***:**:*

B

SAGA1 (4/4)

Cre Cre11.g467712.t1.1
Tva PNH05753.1
Gpe KXZ43034.1
Vca Vocar.0009s0363.1.p

TKYA-LPAPASPRGAIEAASSAAAADAAATARDDAAAAAQRRPAANPAAAEYEDAGSN
LKFAAQSPPAATPPPATPTPPPVESPTSGAKGGGS-----TSSDRGGSSSVA
AKAAPLPPQPAAT---GDASPPAWSSSAKGLPAPGA-----PPGSSLPSPAFT
AKYLQEQQQQQLPGLSADRSLGLEPSSSDAAPGAGRSSNSRSSNSSSSSSSSTPGNG
* . .: .:

Cre Cre11.g467712.t1.1
Tva PNH05753.1
Gpe KXZ43034.1
Vca Vocar.0009s0363.1.p

KDNLFTRSRTSTGSSSSSSGSGSGSSSGGGGGTSKAQPPQGRST-----SA--DWR
VEGMFSSRVNKDSS-----SGGSSSSGGGRPALV-----RSN-----SPS-DWR
RTGMPPSPPPVSPSS-----SGG---GGSGPPASAPQRSPSGRSN-----SPPLDWR
GGGQPQYQSIFERS-----VGGGGGGGGGGGSAPSRSKSSSTVTPSTPPPPSDWR
. * ** .*.* *. .. ***

Cre Cre11.g467712.t1.1
Tva PNH05753.1
Gpe KXZ43034.1
Vca Vocar.0009s0363.1.p

RLVSG-----GDAAGKDADGGGRGTGDSPTRRAFGDWRKNI
KQITGGDGGKGGKGDAGGGGQDDDRGAGASPTRRNFGDWRAM-
KQLGG-----
QRLGA-----GEGGDSGAARGVSPTRRITYGDWRAG-
. : .

C

SAGA2 (2/3)

Cre Cre09.g394621.t1.1 GRVSKHSGSAGGSASDSEGETVTKANWREALAAAHDAGSDGE-----
 Gpe KXZ45943.1 -----
 Vca XP_002951554.1 TSPSSSSSGSAAAAAKRSSPRTATSSNWRQMLEEEEEAEHREELQQHQYHQQQQVEVEE

Cre Cre09.g394621.t1.1 -----EAAVARSSSPARAGAGWPRATSPGARATSPG---
 Gpe KXZ45943.1 -----
 Vca XP_002951554.1 LFGGFMLGSSRRGDVEGMVEEQSGIGRSLDSRAGSPARMGSLSPRGSFSPSPSRSPSPGA

Cre Cre09.g394621.t1.1 -----RSQPVAAALAAEHARMADLERQHMEAMEAARQAQDAQRQVESQLAARAA
 Gpe KXZ45943.1 -----
 Vca XP_002951554.1 NDAVQQAEEQQAAAAAAAAAAAAAAAAARLAALAEHLSAMEAARLAAVEAQKQLEGQLAAKAA

Cre Cre09.g394621.t1.1 LEAERVAEYESAMAALKAQVEAAQAEAAAANRLALETMGQQLEASRGREQDLSGELGLMQS
 Gpe KXZ45943.1 -----
 Vca XP_002951554.1 EEEARIAEYEAQMAMLRQQVDAQSEASNQLSLHALQQQLEASRGREADLSEELTAMQG

Cre Cre09.g394621.t1.1 RLAEAAARSHNSNSDAVNALESALQAARSQYGALAEMQRADAAGSYSLRLLERLEAAYTG
 Gpe KXZ45943.1 -----
 Vca XP_002951554.1 KLAEAARSHTSNTAEAVDVLESALQTARQQYESALTELQRADAAGSYSLGLLDRLEAAYLA

Cre Cre09.g394621.t1.1 AVDQYEDLEKELVAAKNAQAQSESMLAAMEAQVATSMKLAGSVQVYEKQVAVLQEQQLQMS
 Gpe KXZ45943.1 -----S
 Vca XP_002951554.1 AVDQYEEVVAELATAKASQQSQAMLQTLAQVAASVQLAGSVEVYEKQVQMLQEQQLQLS
 *

Cre Cre09.g394621.t1.1 AEAHEAELGALQGQLASVEARASQTEDLYESMLKEMKSALDDALAREQVLHRELSSMQSR
 Gpe KXZ45943.1 ASAHEEELSALSGQLRGLERSAQTEELYESMLKEMKAALDDALGREAMLHSELSSGLQSR
 Vca XP_002951554.1 AQAHEAELSLGQLRSVEVRSQQTEDLYESMLGEMKSALDDALAREQTLHAELNSMQRR
 * .*** ** .*** .:*.*: **:* **:* **:* **:* ** * * * .: * *

Cre Cre09.g394621.t1.1 AEEFQRQVEKAAAGMGESTRQEEALRKEVARLRRVIEQYK-----EYLEEHDGELGRSLE
 Gpe KXZ45943.1 TEELQAQAAQAAAGVSESRAAEEAMRKETQRLRQVIQYK-----EYLEEHDGELGRSLE
 Vca XP_002951554.1 ADEFQKQVEAAAAGMSDSARQEEALRKEVARLRRVIEQYKHPGSQEYLTEHDGELGRSLE
 :.*:* * . ****.::* **:* **:* **:* **:* ** * * * * * .****

Cre Cre09.g394621.t1.1 REEALDAQLSSLOAVVSQQESQLRGALERQQALSAELEEQRRTADEYQAKLEEQQRELAE
 Gpe KXZ45943.1 REEALDAQLTGLQVVAQQEAAALRAAERQEALAAELEAQRASAEAAQAKLEEQQKELAE
 Vca XP_002951554.1 REEVLDAQLTSLQAVVRQQEEQLQAALERQDELSRELEHQKTAEDYKSQQLSEQQAAALQE
 .*.:** ** ** * ..* ***: *: ** * . :*: :*:*.*** * *

Cre Cre09.g394621.t1.1 AAAKQAAMNERADSMTREMGRLQELTESYKAKLEASQSEVEAAAAREKAAVAAARAAGER
 Gpe KXZ45943.1 AAAMQAGMRERAESMTAEISRLQELTEGYKTKLALTESEAADAAREAEALRKVEAAGAR
 Vca XP_002951554.1 AAEEKQAAMQERAEAMQREMDRLQGLTESYKTKLEASRSEAEALAAAREALVRQVEASGTR
 ** **.*.***:.* *:.* ** * **:* ** : ** . **** : . *:* *

Cre Cre09.g394621.t1.1 EGDLLGRVEKQLQANIASYKSKLQEQERSLSTAAQRESSLQAALAEQEVERVALAEQLHD-
 Gpe KXZ45943.1 ETDLLGRVEKQLQLSIAQYKSKLQDQAASLSAAEREGALTASLAEASSETAALKQELSSL
 Vca XP_002951554.1 EGDLLGRVEKQLQASIAQYKSKLQDQESSLSAAAAREGELMAALRDQEGDSADLRHRELEL
 * ***** .***.***.* **:* ** * . * * : . : . * * .

C

SAGA2 (3/3)

Cre Cre09.g394621.t1.1 -----AVETITTSQKQVLENATAAQEEVL-VMAQQVQTL-----
Gpe KXZ45943.1 GGQYRKAVDTIASQQEQLEEAAKVVAKVD-GMAVQVQTL-----
Vca XP_002951554.1 GGEYRAAVETIEEQGRLEAVTNAAEQHEAAMAVQVQTLQPALHKSGTIRVRYIPPPPTR
:* .*: ** .: . : ** ***

Cre Cre09.g394621.t1.1 -----QVELSAERNRHTEEMQQVQMALDEATTANKERLQVIGGSGG
Gpe KXZ45943.1 -----QVELSSERSRHNEELTAVAAALEEAAAGDRSRM-----
Vca XP_002951554.1 CAPSTFKTLKTCILKPHPSQVELSAERTRHTEEMQQVQQALEAATEVDRLRMQGRAQQG-
*****:*.*.*.*:*: * **:* *: .: *:

Cre Cre09.g394621.t1.1 GLPGSTSASASGSASGSTSASGTTAALQPSASAGSSAKADSDLEFAADDAMASGGEIDYD
Gpe KXZ45943.1 -----
Vca XP_002951554.1 --RSRHRMRREGNFMVAVTMEGFQAGI-----

Cre Cre09.g394621.t1.1 QAEFEMQKAVLKAIEYEVKVTALKEALAVVKNALAPGAVKRPTAAAMPPPARAAAAPAPAPP
Gpe KXZ45943.1 QAEFEMQRAVLKAIEYEVKLTALKE-----
Vca XP_002951554.1 RAEFEMQKAVLKAIEYEVKLTALKEALVVKNALNPATTKNA-----
.*:****.******.*:****

Cre Cre09.g394621.t1.1 AAARPAPPQAEERREQPPI PAPQPPQQAQPQAQVQPKAEKPKAEKPAAPPAAPAPAPAK
Gpe KXZ45943.1 -----PRPPPSRFTLTEIVT-----
Vca XP_002951554.1 -----PTVAPPQQQQQQSLPP-----
** . .: .

Cre Cre09.g394621.t1.1 TKPDWREQAQAPVQAAAAAPVQAAAKPAEAAAAPATASTKPEAPKPAPAASSAPSSTTS
Gpe KXZ45943.1 -----
Vca XP_002951554.1 -----

Cre Cre09.g394621.t1.1 GADSRSPSPRTLAWREAAEAQEREQESKRQVEEQARIAAVAEAEARRAEDEFRRKHADDVP
Gpe KXZ45943.1 -ARSRSPVRQHLLA-----EHSARRAEN-----
Vca XP_002951554.1 -AQHRTASP-----
* *:.:

Cre Cre09.g394621.t1.1 AGGRGKTLREIINMTATERAAVVQETESLPRAASPARNASENARMRGWPVRIADMCPEDK
Gpe KXZ45943.1 -----HDH
Vca XP_002951554.1 -----

Cre Cre09.g394621.t1.1 EQQEQQEGGAKAERESERGAAGSGKRSESSERSESSERASPSKKGKGNRWANLANGES
Gpe KXZ45943.1 SSNGNGNGNGASANGNGHGEAATAAPSPSS-----SPGRSSRWASMA----
Vca XP_002951554.1 -----VAAATAPLPAAASSSPSLTPT-----FATKVKWASMASELA
: *:.: * :. . .**.*:

Cre Cre09.g394621.t1.1 AGAAASAASSSSSAAAAAEKQERQRGSGSNTSSSNGASSNGASSRNGTHAAGEDVREV
Gpe KXZ45943.1 -----EEMAKVRGGGKGAADAAAGSGSAEEGSGASQRG-----
Vca XP_002951554.1 AARGEQPSASTSAAIAPVDANISVERNG---KVISHGNNKELSVAAGAEQVD-----
*.. : . . . *

Cre Cre09.g394621.t1.1 GKDDAAEAGRSASGRRNASPVRR-TAIPANWRDAL
Gpe KXZ45943.1 -----SSRGGTSPTRQR-TRVPANWRDAL
Vca XP_002951554.1 -----SVSGRDSSTGVRRKTSIPSNWRDAL
* * .: . * * :*:*****

D

RBMP1

Cre Cre06.g261750.t1.2 MQCQLKHGARPOQSQRPNWLPARAATLRPAVQHGVRRGLTLGVKAAAAPLEDKMPADMTT
Vca Vocar.0002s0473.1.p MQSQLQPRQLQLQGTRLNWLQQRSCVQRRSLRVDATSG-----AAPPPPAGKELSNDMVT
 .*: . * . * ** *:. * ::. .. * **.* .*: . **.*

Cre Cre06.g261750.t1.2 RQYRRVYDFALWAKHRDVNRYLYNLRTIPGSRIIRQLSQPMGVVLAWAALFGFYETCLE
Vca Vocar.0002s0473.1.p RQYRRTVYDFSLWAKHRDVNRYLYNLKTIIPGSRIIRTGLQPMGIVLAWAAMFGFYETCLE
 *****.*:*****.* ***** *.*:*****:*****

Cre Cre06.g261750.t1.2 AGVLPSYLPKMTLMSAEPQGLTSFALSLLLVFRTNSSYGRFDEARKIWGGILNRARNIAN
Vca Vocar.0002s0473.1.p SGVLPSYFPKLTMSAEPQGLTSFALSLLLVFRTNSSYGRFDEARKIWGGILNRARNIAN
 :*****:**:*****

Cre Cre06.g261750.t1.2 QAVTFI PAEDQAGREAVGKWTVGFTRALQAHLQEDIDLKLEKATPRWSKEEIDMLVNA
Vca Vocar.0002s0473.1.p QAVTFI PAEDVAGREAVGKWA VFCRALQAHLQEDANLREELQKAQPRWSREEIDMLCSA
 ***** *****:*** ***** :*:**:* * **.* ***** . *

Cre Cre06.g261750.t1.2 QHRPIKAISVLSSELTRQLSITQFQALQMQENCTFFYDALGGCERLLRTPIPVSYTRHTAR
Vca Vocar.0002s0473.1.p QHRPIKAISMLSELTRQLPI SQFQALQMQENVTFYDALGGCERLLRTPIPVSYTRHTAR
 *****:*****.*:***** *****

Cre Cre06.g261750.t1.2 FLTIWLAMLPLGLWERYHWSMLPVIALIGFLLL GIDEIGISIEEPFGILPLDAICGRAQT
Vca Vocar.0002s0473.1.p FLTIWLSLLPLGLWDRYHWSMLPVIALIGFLLL GIDEIGISIEEPFGILPLDAICTRAQT
 *****:*****:*****

Cre Cre06.g261750.t1.2 DVNSLLKEDPAVMKYVDDVRSRGRVKSPPPLPPAPAPAAA-----AAAAAARSVSP
Vca Vocar.0002s0473.1.p DVVSLKDDPAVVKYISDVRQGR IAPTEPPVAGAAPVAAAPPPPPASAGGGISRSRGS
 ** **.*:***:*.**.*: .*. * * **.* ** *:*... :* **

Cre Cre06.g261750.t1.2 ----QPDVAKTLGLSFTNVRAGVAVGAPLMPQAPVRSRSPTRSVSP----SFPRASA
Vca Vocar.0002s0473.1.p TAQQQPDVMKTVTSM LHNKAGIGAVAPAPRPPSPQPRARSP--RAASPGGSPFPFRASA
 **** **.*:*.**.*:*****.* *. * .*: ** *:.** *****

Cre Cre06.g261750.t1.2 GTGMPPVGMNGATPRVAAAPPTPPVSRPAAPAAA-----PAAGSGFTMP
Vca Vocar.0002s0473.1.p GTG-----GAAAVPSPPPIKPLTSSSSSSGAVSKDSNNSTATAKPPASAPAAASA
 *** **.* *:.**.* * . * .:..:.* **:*... :.

Cre Cre06.g261750.t1.2 NFSASLSGLTGAAAAAASAAADAASSKLTKMADSMSSGAAAPAPPAAPAR-----
Vca Vocar.0002s0473.1.p GFSGMFGSLADGAAAAAKSAS-AAAAKFSKIADSVVAG--TPAAPASEAKRETA AAAAMQ
 .* .:***:*****: **:*:*.**.*: * * :**.*: *

Cre Cre06.g261750.t1.2 -----PSTSPRPSASSPISSADADRSDSSRR---PVNWRDELQSLKATRE-----
Vca Vocar.0002s0473.1.p AQPRTTPSSSSSTPSAAPANGSSDDDRSSSGRR TAAAVNWR EEL AALRAGREDAEEPASA
 :* . .:..:.* .*: * **.* ** .*:*** :*.* **

Cre Cre06.g261750.t1.2 -----PNGNGNGSGVAPAA--GRADADEEALRRFGNLAGRSR-----S
Vca Vocar.0002s0473.1.p SASYDREFPSSWSFSSASSAAVQSGDAEDEARRRFGGLAGRARS DTTTSAAVMRGN
 *... . *...:*** **:*:*** **.*.

Cre Cre06.g261750.t1.2 GNG-----GGSSDTELSEANRPRTRPDWRNQL
Vca Vocar.0002s0473.1.p GNGLSENGYNGYGNDNGNGNTVEARGARPRTRPDWRNQL
 *** *.*:.* :. *****

E

RBMP2 (2/4)

Cre Cre09.g416850.t1.2 LLAAGSPPPVDA-----AAAANAAAPAAPAAAPLPADAEALGQLSEALQRELKAVVGPD
Gpe KXZ45361.1 LLSLSDGSQSSAAALVVGDAVSAASASAGGAEAAAAAAAAATQLTEALRRELAAAVGPD
Vca XP_002956061.1 -----SVATLPSASAEPAAAAAAAAAATAVSAAMAGE---GAGAD
: : : : : . * * * * : : * * * . * . *

Cre Cre09.g416850.t1.2 VDVEAAAADPSALAEAGRAVDSALGSLDSGALEALGQLPPDVRLSLLGAVLQSALDLV
Gpe KXZ45361.1 VE----SADPAALADAAGSAITSALSSLDPAALTAVGSLPAERLRTLLEASMQSSLDLV
Vca XP_002956061.1 GQMGVYGMDF-----LDTQQLDE-----LTTALQATLQSSLDLV
: : . * * * * * * * : * * : * * : * * : * *

Cre Cre09.g416850.t1.2 DAAVSGVRQADSEVVGGVAIVVVVGLAIRSLVSVLGNALGGPRGGAMPASAGGGGVDA
Gpe KXZ45361.1 DAAVGGVENADSTLVGGVTVAAVVALLRSLVSMASAIISRSD-----VVAAGAGAV
Vca XP_002956061.1 EAALSGIRSADSTLVGGVTIAAVLAVVIRSLVSMAGAALSRTRG-----PGGGGGEAG
: * * : * * : * * : * * : * * : * * : * * : * * : * * : * *

Cre Cre09.g416850.t1.2 GGAPRTLAEAVAAEGSARATGSRTRSALGVTALEAAAALNNEPKALLLDVRNSGDVYEQG
Gpe KXZ45361.1 GNAP---AAEAAAPGDA-----RLRPVAVGVSFAEAAATLNNDTNSLLLDIRNATDVSEQG
Vca XP_002956061.1 GGGG---GSAAAAA-----RMRP-VGVTALEAAAALNNDPQALLDIRNGSDVYEQG
* . . . * * * * * * * * : * * : * * * * * : * * : * * * * * * * *

Cre Cre09.g416850.t1.2 LADLRPFRRGSGAASAALPYLDFRTTPTLANPSGLL-----G-----
Gpe KXZ45361.1 LPDLRPFRRGAGATSVSLPYCDFRTTPTLANPSGALPSPPPAPTVAAPQAPAGLLGLLGF
Vca XP_002956061.1 LPDLRPFRRGAGATTVPLPYCDFRTTPTLANPSGSLAAAAATGPAAGSPRG-----
* . *

Cre Cre09.g416850.t1.2 ---GSGGAGAA-----GSAVAAVDPQFVPRFKQLKGLGRDSRVLLL
Gpe KXZ45361.1 GTPGSAAAGSAQPVGAAASPDGSLMAAPRGPVTVSVDPPQFQAKFKQLAPLNRDVKVFL
Vca XP_002956061.1 ---KAAAAALAPVA-----GPVTVSVDPLFCSKFKQLEGLNRDSRVFLM
: . * . : * . . : * * * * * . * * * * * * * * * * : * * : * *

Cre Cre09.g416850.t1.2 DSYGVEAPEAVALLRSDPDIERLLGGEGVSFVEGGFAGPEGWKLTGLPVMDDPEPAEAEAR
Gpe KXZ45361.1 DSYGVESPEAVSLLRSDPDVERMLGSEGLAFVEGGFAGPEGWKLSGLPTAEP---ALEGE
Vca XP_002956061.1 DSYGVEAPEAVLLRSDLEVEGLLGAQGVKVFVEGGFAGPEGWK----PDLNP--LTLSS
* * * * * : * * * * * : * * : * * : * * : * * * * * * * * * * * * * *

Cre Cre09.g416850.t1.2 GAAGAGRPLLRRGGLDTSGLVGLLALQMRYPALLTRVLAVGAVGGVGVAAASRVWDGAV
Gpe KXZ45361.1 GAASRGLDFGR-----LAGGMSGLRMRYPSLLTRVLGVGALGTGGLALASNLWDGAV
Vca XP_002956061.1 FLIFAAIQYYT-----ADISSCHVYLPFMYPSLFGRTLAVGAVGGAGVAAASSLDWASV
. : . * : * * : * * : * * * * * * * * * * * * * * * * *

Cre Cre09.g416850.t1.2 SRGGVALAALLVADRALPTGVRPSAKLRSQLQAQLEAPADSNAAAAAASSQQ-PGDKRR
Gpe KXZ45361.1 ARGVGIAAAALLVADRALPTSVRPTAKLRQHLQAQLAA-----GGNGTD-----AGQRRR
Vca XP_002956061.1 SRGAVGLAAAMLLTDRVLPVPPGVRPSGKIRQYLQSQLSDPQPNDDGGSGASAAADLAAARRR
: * * . * * : * * : * * * * * : * * : * * * * * * * * * * * * *

Cre Cre09.g416850.t1.2 AALILRALDLVDAVGDVAVKAGQTAFAAAGGAASAA-----AKTAAASAT
Gpe KXZ45361.1 TALLLRALDLAEAVGDVAVRAGSAAAATAGSLATNAANAAYNGPYDNTATASPAANAA
Vca XP_002956061.1 TALLLRALDLAEAVGDVAVRAGGAAVAAAGSAARGAI-----AASGGGSAA
: * * : * * * * * : * * * * * * * * : * * * * * * * * * * * * *

Cre Cre09.g416850.t1.2 SAAATAWPTASAGMGEAAGDAAS-ARASTVM-----SNWRDVI DSGA-----
Gpe KXZ45361.1 AAAPAAASSAIAASAQLETPQSP-ANANTVVLPGMDSQQWATSA TASA-----
Vca XP_002956061.1 AAAATAANAGPADVEAELET PPPPAAAAATIVLPHGMSRQWSEAAEMAVAQVQQQPAA
: * * : * * : . * * * * * * * * * * : * * * * * * * * * *

E

RBMP2 (4/4)

Cre Cre09.g416850.t1.2
Gpe KXZ45361.1
Vca XP_002956061.1

SGVEGQAQPQ-----RRAGSGRARVVVSAG-----S
-----NSNGTVRQRAALA-----S
EPSGSASESEWEAAAAATEPGDRTSLYGSVGGTASNGRTASGSIRSRNAAAVGATAAFP
* : * * . :

Cre Cre09.g416850.t1.2
Gpe KXZ45361.1
Vca XP_002956061.1

RAPSNWRQQVDG-----GSNG
RSPGNWREQVE-----GSAA
RSPSNWRVQVEGLDRPDSSTSSSSSRGFGGVPADWRTRIESGAPATATAIAADGLNGQDS
* : * . * * * * * : * . .

Cre Cre09.g416850.t1.2
Gpe KXZ45361.1
Vca XP_002956061.1

NGNGNG-----NGNGQ-----SSP--RHATPANLSPSERLAREARMRDWR
QASASV-----NGNGR-----PGTP--ARASSARLSASERAERDARLADWR
SGSAAASIGSVYDDDVSTSGNNRYSRGSYPSSPGGSRGSSRKLGAERAARTARLQDWR
..... . * * * . . : * * * * : * * *

Cre Cre09.g416850.t1.2
Gpe KXZ45361.1
Vca XP_002956061.1

ARV
ARV
ARV
* * *

G

CSP41A

Cre Cre10.g440050.t1.2
Tva PNH08146.1:16-201
Gpe KUJU_scaffold_2002853
Vca Vocar.0001s1288.1.p

MQSSMRA-RVAGGARAVGTAGRRLTVKVMNSNVL IANTKGGGHAFI GLYLAKELLKKGH
-----AGRRLSVQVMNANVLIANTKGGGHAFI GLYLAKELLKKGH
MQAQLRAGRVPGGARRAVAPAGRRLTVKVMNANVLIANTKGGGHAFI GLYLAKELLKKGH
MHAQLKANR-AGGARAFAPAGRRLSVKVMNANVLIANTKGGGHAFI GLYLAKELLKKGH
*****:*:*:*:*****

Cre Cre10.g440050.t1.2
Tva PNH08146.1:16-201
Gpe KUJU_scaffold_2002853
Vca Vocar.0001s1288.1.p

KVTIMNDGSDKLTTKKNPYAKYSDLERQGLNVVWADPAKPSTYPRGTFDVVYDNNGKDLA
KVTIMNDGDESKLVKKAPFNKYSELAREGASIAWGDPAKPSTYPRGNFDVVYDNNGKDMG
KITIMNDGDESKLSKKAPFNKYSELAREGVTIAWGDPTKPKSTYPRGSFDVVYDNNGKDLA
KVTIMNDGDESKLTKKTPFSKYSELARDGATIAWGDPTKPKSTYPRGSFDVVYDNNGKDLA
*:*****. ** * *: **:* *:* .:*.**:*:*****.*****:.

Cre Cre10.g440050.t1.2
Tva PNH08146.1:16-201
Gpe KUJU_scaffold_2002853
Vca Vocar.0001s1288.1.p

SCQPLIDHFHKHKVDHYVVFSSAGAYKADPIEPMHVEGDARKSTAGHVEVEAYLEKARLPY
SCQPMIDHFHKHKVDHYVVFSSAGAYKADSIEPMHVEGDVRKATAGHVEVEAYLAQSRMPY
SCQPLIDNFKHKHVEHYVVFSSAGAYKADSIEPMHVEGDTRKSTAGHVEVEEYLKNARMPF
SCQPMIDHFHKHKVDHYVVFSSAGAYKADSIEPMHVEGDARKSTAGHVEVEAYLEKARVPY
:*.**:*:**.*****.*****.***:***** ** :*:**:

Cre Cre10.g440050.t1.2
Tva PNH08146.1:16-201
Gpe KUJU_scaffold_2002853
Vca Vocar.0001s1288.1.p

TVFQPLYIYGPNTAKDCEQWFDRIIRD RPVLLPAPGVQLTSLTHVEDVASMLA AVPGNR
TVFQPLYIYGPNTGKDCEQWFDRIV-----
TVFQPLYIYGPNTGKDCEQWFDRIVRDRPVL IPTPGVQLTSVTHVEDVASMLA AVPGNR
TVFQPLYIYGPNTAKDCEQWFDRIIRD RPVPIPSPGIQLTSLTHVEDVAAMLALVPGNR
*****.*****:

Cre Cre10.g440050.t1.2
Tva PNH08146.1:16-201
Gpe KUJU_scaffold_2002853
Vca Vocar.0001s1288.1.p

AAIGQHYNVCSDRICITFTGIAKAIGKALGKDPEIILYSPEKVG TGKSGKAEGFPFR TVHF

AAIGNIYNICSDRISFVGI AKSVGKALGKEADVLLYSPEKVG TGKSGKAEGFPFR TVHF
EAIGQMYNVCSDRICISFVGICKSVAKALGKEANIVLYSPEKVG TGKSGKAEGFPFR TVHF

Cre Cre10.g440050.t1.2
Tva PNH08146.1:16-201
Gpe KUJU_scaffold_2002853
Vca Vocar.0001s1288.1.p

FASADKAKRELGWKPKHDFQKDVQGLVNDYKANGRDKKEVDFSVDDKIL AALGKSVPKSS

FASSDKAKRELGWKPKHDFQKDVAAALVADYK SQGRASKEIDFSIDDKIL AALGKSVKSSA
FASSDKAKRELGWKPKHDFQKDVAAALVADYKAQGRDKKD VDFSIDDKILEALGKPFKPA A

Cre Cre10.g440050.t1.2
Tva PNH08146.1:16-201
Gpe KUJU_scaffold_2002853
Vca Vocar.0001s1288.1.p

SNSSVSAS---FSRLSSSGPKAEELPRSRSSFSPPRDLKIKRTVLPANWRDSLDEDEPAK

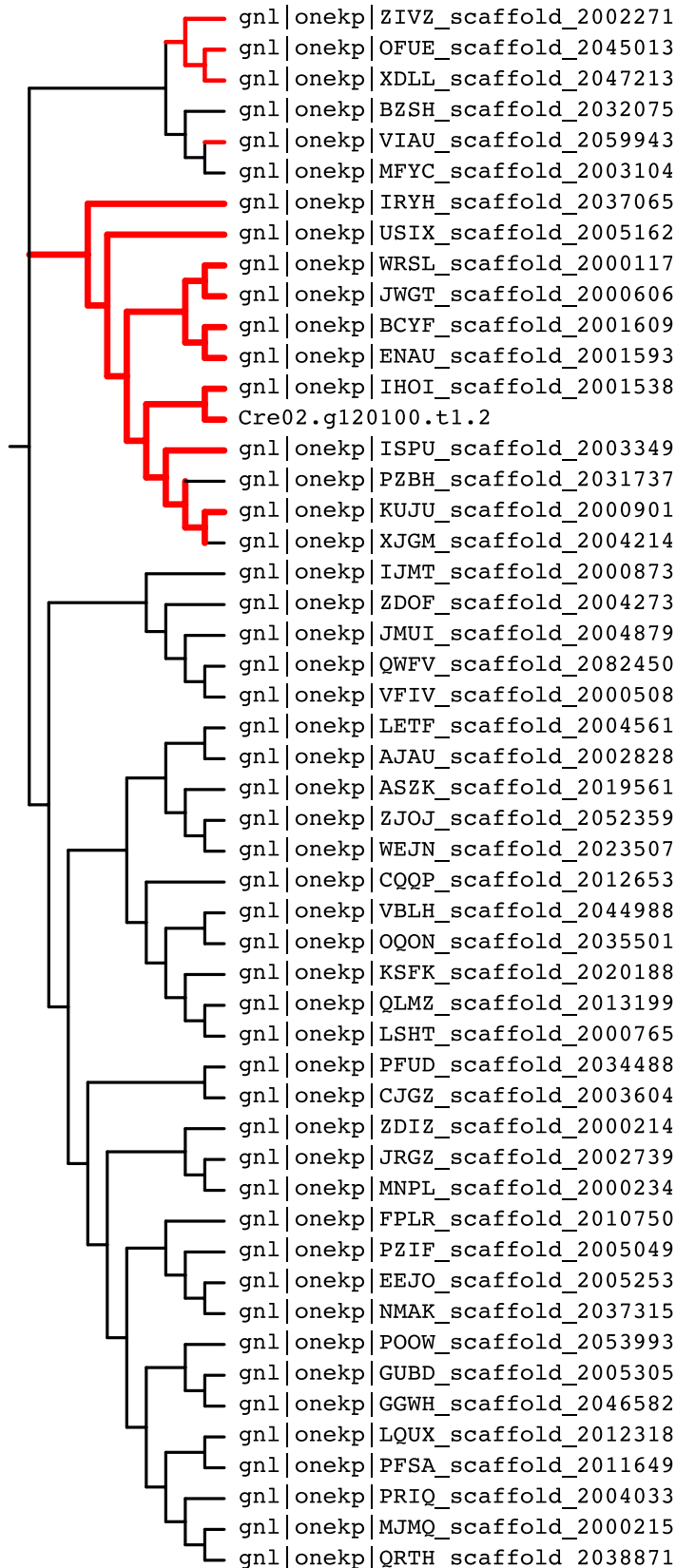
PAPSNNGAPELTRVSSPSAESGAP-RIHSSHSPRRDLKIKRTVVP SNWRDSGDGGSV--
VDSSSSSNG--FTRISSASPSPPAQRRSSFSPPRDLKIQR TVLPNWRSLDGGEAVS

Cre Cre10.g440050.t1.2
Tva PNH08146.1:16-201
Gpe KUJU_scaffold_2002853
Vca Vocar.0001s1288.1.p

PAAGRSATTGRSGSVPKDWRSSL

----AASPPSRSSAPRDWRNAL
ATPSAAPRPARSSSVPRDWRSSL

H



23 24 87 90 91 94

DQQIARQVDYIVG---PSQVLKEVSQCTRA
DEQIARQVDYIVG---AMQVLKEIVACTKA
DEQIARQVDYIVG---GIQVLKEIVACTRA
DDEIARQVDYIVG---PSQVLREVNACSRG
DSQIAKQVDYIVS---ASQVLKEVSGCSRA
DSQIAKQVDYIVS---ASQVLKEVSGCSRA
DDQIAKQVDYIVG---PSQVLSEINKCSRA
DEQIAAQVDYIVA---GIQVLKEIVACTRA
DEQIAAQVDYIVA---PMQVLREVVACTRA
DEQIAAQVDYIVA---PMQVLREIVACTKA
DEQIAAQVDYIVA---PMQVLREIVACTKA
DEQIAAQVDYIVA---PMQVLREIVACTKA
DEQIAAQVDYIVA---PMQVLREIVACTKA
DEQIAAQVDYIVA---PMQVLREIVACTKA
DEQIAAQVDYIVA---PMQVLREIVACTKA
DEQIAAQVDYIVA---AAVLR EIAECKKA
DEQIAAQVDYIVA---PMQVLREIVACTKA
DEQIAAQVDYIVA---PMQVLREIVSCTKA
DGEIAQQVDYVVTG---SSQVLREIAAATRA
DDEIAEQVDYICVE---ADQVLKEVNNCTKA
DEEIGEVDYIVE---AEQVLGEIYNCTRA
DDEIAEQVDYIVD---ADQVLREVNACTKA
DDEIAEQVDYIVD---ADQVLREVNCTKA
KTQIAKQVDYIVA---PQQVLNEVDQCTRT
SSQIARQVDYIVA---PNQVLGEIDACTRA
DQQIARQVDYIVA---PNQVLGEIDACTRA
DQQIARQVDYIVA---PNQVLAEVNACKRS
DQQIARQVDYIVA---PNQVLGEIDACTRA
HGEIARQVDYIIA---PNQVLGEIDACKRA
PGEIARQVDYIIA---PHQVLAEVDACKRA
PGEIARQVDYIIA---PHQVLAEVDACKRA
DGEIARQVDYIIA---PNQVLQEVQACKRA
DGEIARQVDYIIA---PNQVLAEVNACKRA
DGEIARQVDYIIA---PNQVLAEVNACKRS
DGEIAKQVDFIVN---PSQVLREIRACVSA
NQEIARQVDYIIN---PNQVLGEVDACTRA
ADQIAKQVDYIVN---PSQVLREVSSQOIA
SDQIAAQVDYVVS---ASLVLEVDACTRA
SDQIAAQVDYVVS---ASLVLEVDACTRA
SDQIARQVDYIVG---PVQVLREIDNATKA
DDQIARQVDYIVN---PVQVLREIDNATKA
DDQIARQVDYIVN---PVQVLREIDNATKA
DDQIARQVDYIVN---PVQVLREIDNATKA
SDQIARQVDYVVG---PSAVLTEISRASKA
SDQIARQVDYVVG---PSAVLTEISRASKA
SDQIARQVDYVVG---PSAVLTEISRASKA
SDQIARQVDYIVG---PSSVLTEIARCSKA
SDQIARQVDYIVG---PSSVLTEIARCSKA
SEQIARQVDYICVG---PSAVLTEISRASKA
SEQIARQVDYICVG---PSAVLTEISRATKA
SEQIARQVDYICVG---PSAVLTEISRATKA

Fig. S9. Homologs of the Chlamydomonas Rubisco-binding pyrenoid proteins are present in the proteomes of other Volvocales. (A) For each protein, a schematic alignment of homologs is shown. Each motif is shown at its exact position in the alignment. Species abbreviation; *Cre*: *Chlamydomonas reinhardtii*; *Tso*: *Tetrabaena socialis*; *Gpe*: *Gonimum pectorale*; *Vca*: *Volvox carteri*. The current state of genome assemblies and predicted proteomes may affect the quality of the alignment. (B) Motif-containing homologs of SAGA1. (C) Motif-containing homologs of SAGA2. (D) Motif-containing homolog of RBMP1. (E) Motif-containing homologs of RBMP2. (F) Motif-containing homologs of EPYC1. (G) Motif-containing homologs of CSP41A. (H) Alignment of green algal Rubisco small subunit protein sequences. Only the amino acids of the two alpha-helices that interact with the motif are shown. The phylogenetic cladogram was constructed on full lengths sequences. Key residues identified in (21) are highlighted. Branches leading to Volvocales are colored red in the cladogram.

Table S1. Raw mass spectrometry counts of proteins coimmunoprecipitating with anti-SAGA1 antibody. (see Fig. 1E) gene_ID: as per *Chlamydomonas reinhardtii* genome v5.6 (Phytozome 13). gene_name: commonly accepted alias, when available. IPMS_WT_raw_spectral_counts. IPMS_saga1_raw_spectral_counts. pyrenoid_proteome: Y indicates presence in the pyrenoid proteome (17); N indicates absence. Rubisco_interaction_WD_score and Rubisco_interaction_Z_score are metrics of coimmunoprecipitation with RBCS-Venus-3xFLAG; WD-scores above 48 indicate particularly high confidence (see 18).

Table S2. *Chlamydomonas reinhardtii* proteins containing one or more instances of the motif. gene_ID: as per *Chlamydomonas reinhardtii* genome v5.6 (Phytozome 13). gene_name: commonly accepted alias, when available. #motifs: number of motifs. motif_scores: from 0 to 6, as defined in Material and Methods. motif_positions: position is for the 9th amino acid upstream of the motif's tryptophan. motif_sequences: spanning the colored residues in Fig. S2A. motif_disorder_scores: disorder scores used in the analysis shown in Fig. S7 (motif disorder scores were only determined for motifs whose motif_score was equal to or greater than 3). pyrenoid_proteome: Y indicates presence in the pyrenoid proteome (17); N indicated absence. chloroplast_proteome: Y indicates presence in the chloroplast proteome (50); N indicates absence. defline/description/synonyms: succinct gene descriptions as per Phytozome. predalgo_protein_localization: predicted subcellular localization, as per (52), where C = chloroplast, M = mitochondria, N = nucleus, SP = secretory pathway, O = other. PFAM/Panther/KOK/KEGG/Gene_Ontology_term: different predicted functional annotations and gene ontologies. best_arabidopsis_TAIR_hit_name/symbol/defline: available data for the closest homolog in the model land plant *Arabidopsis thaliana*.

REFERENCES AND NOTES

1. J. A. Raven, Contributions of anoxygenic and oxygenic phototrophy and chemolithotrophy to carbon and oxygen fluxes in aquatic environments. *Aquat. Microb. Ecol.* **56**, 177–192 (2009).
2. A. Bar-Even, E. Noor, R. Milo, A survey of carbon fixation pathways through a quantitative lens. *J. Exp. Bot.* **63**, 2325–2342 (2012).
3. C. J. Still, J. A. Berry, G. J. Collatz, R. S. DeFries, Global distribution of C₃ and C₄ vegetation: Carbon cycle implications. *Global Biogeochem. Cycles* **17**, 6-1–6-14 (2003).
4. E. Granum, J. A. Raven, R. C. Leegood, How do marine diatoms fix 10 billion tonnes of inorganic carbon per year? *Can. J. Bot.* **83**, 898–908 (2005).
5. J. A. Raven, J. Beardall, M. Giordano, Energy costs of carbon dioxide concentrating mechanisms in aquatic organisms. *Photosynth. Res.* **121**, 111–124 (2014).
6. S. C. Maberly, B. Gontero, Ecological imperatives for aquatic CO₂-concentrating mechanisms. *J. Exp. Bot.* **68**, 3797–3814 (2017).
7. C. B. Field, M. J. Behrenfeld, J. T. Randerson, P. Falkowski, Primary production of the biosphere: Integrating terrestrial and oceanic components. *Science* **281**, 237–240 (1998).
8. J. H. Hennacy, M. C. Jonikas, Prospects for engineering biophysical CO₂ concentrating mechanisms into land plants to enhance yields. *Annu. Rev. Plant Biol.* **71**, 461–485 (2020).
9. B. D. Engel, M. Schaffer, L. Kuhn Cuellar, E. Villa, J. M. Plitzko, W. Baumeister, Native architecture of the *Chlamydomonas* chloroplast revealed by in situ cryo–electron tomography. *eLife* **4**, e04889 (2015).
10. M. T. Meyer, C. Whittaker, H. Griffiths, The algal pyrenoid: Key unanswered questions. *J. Exp. Bot.* **68**, 3739–3749 (2017).
11. J. D. Pickett-Heaps, *Green Algae: Structure, Reproduction and Evolution in Selected Genera* (Sinauer Associates, 1975).

12. C. Toyokawa, T. Yamano, H. Fukuzawa, Pyrenoid starch sheath is required for LCIB localization and the CO₂-concentrating mechanism in green algae. *Plant Physiol.* **182**, 1883–1893 (2020).
13. L. C. M. Mackinder, M. T. Meyer, T. Mettler-Altmann, V. K. Chen, M. C. Mitchell, O. D. Caspari, E. S. Freeman Rosenzweig, L. Pallesen, G. Reeves, A. K. Itakura, R. Roth, F. Sommer, S. Geimer, T. Mühlhaus, M. Schroda, U. W. Goodenough, M. Stitt, H. Griffiths, M. C. Jonikas, A repeat protein links rubisco to form the eukaryotic carbon-concentrating organelle. *Proc. Natl. Acad. Sci. U.S.A.* **113**, 5958–5963 (2016).
14. A. K. Itakura, K. X. Chan, N. Atkinson, L. Pallesen, L. Wang, G. Reeves, W. Patena, O. D. Caspari, R. Roth, U. W. Goodenough, A. J. McCormick, H. Griffiths, M. C. Jonikas, A Rubisco-binding protein is required for normal pyrenoid number and starch sheath morphology in *Chlamydomonas reinhardtii*. *Proc. Natl. Acad. Sci. U.S.A.* **116**, 18445–18454 (2019).
15. E. S. Freeman Rosenzweig, B. Xu, L. Kuhn Cuellar, A. Martinez-Sanchez, M. Schaffer, M. Strauss, H. N. Cartwright, P. Ronceray, J. M. Plitzko, F. Förster, N. S. Wingreen, B. D. Engel, L. C. M. Mackinder, M. C. Jonikas, The eukaryotic CO₂-concentrating organelle is liquid-like and exhibits dynamic reorganization. *Cell* **171**, 148–162.e19 (2017).
16. T. Wunder, S. L. H. Cheng, S.-K. Lai, H.-Y. Li, O. Mueller-Cajar, The phase separation underlying the pyrenoid-based microalgal Rubisco supercharger. *Nat. Commun.* **9**, 5076 (2018).
17. Y. Zhan, C. H. Marchand, A. Maes, A. Mauries, Y. Sun, J. S. Dhaliwal, J. Uniacke, S. Arragain, H. Jiang, N. D. Gold, V. J. J. Martin, S. D. Lemaire, W. Zerges, Pyrenoid functions revealed by proteomics in *Chlamydomonas reinhardtii*. *PLOS ONE* **13**, e0185039 (2018).
18. L. C. M. Mackinder, C. Chen, R. D. Leib, W. Patena, S. R. Blum, M. Rodman, S. Ramundo, C. M. Adams, M. C. Jonikas, A spatial interactome reveals the protein organization of the algal CO₂-concentrating mechanism. *Cell* **171**, 133–147.e14 (2017).
19. M. E. Baker, W. N. Grundy, C. P. Elkan, Spinach CSP41, an mRNA-binding protein and ribonuclease, is homologous to nucleotide-sugar epimerases and hydroxysteroid dehydrogenases. *Biochem. Biophys. Res. Commun.* **248**, 250–254 (1998).

20. N. Atkinson, C. N. Velanis, T. Wunder, D. J. Clarke, O. Mueller-Cajar, A. J. McCormick, The pyrenoidal linker protein EPYC1 phase separates with hybrid *Arabidopsis*–*Chlamydomonas* Rubisco through interactions with the algal rubisco small subunit. *J. Exp. Bot.* **70**, 5271–5285 (2019).
21. S. He, H. T. Chou, D. Matthies, T. Wunder, M. T. Meyer, N. Atkinson, A. Martinez-Sanchez, P. D. Jeffrey, S. A. Port, W. Patena, G. He, V. K. Chen, F. M. Hughson, A. J. McCormick, O. Mueller-Cajar, B. D. Engel, Z. Yu, M. C. Jonikas, The structural basis of rubisco phase separation in the pyrenoid. bioRxiv 2020.08.16.252809 [Preprint]. 16 August 2020.
<https://doi.org/10.1101/2020.08.16.252809>.
22. S. F. Banani, A. M. Rice, W. B. Peeples, Y. Lin, S. Jain, R. Parker, M. K. Rosen, Compositional control of phase-separated cellular bodies. *Cell* **166**, 651–663 (2016).
23. J.-M. Choi, A. S. Holehouse, R. V. Pappu, Physical principles underlying the complex biology of intracellular phase transitions. *Annu. Rev. Biophys.* **49**, 107–133 (2020).
24. E. W. Martin, A. S. Holehouse, I. Peran, M. Farag, J. J. Incicco, A. Bremer, C. R. Grace, A. Soranno, R. V. Pappu, T. Mittag, Valence and patterning of aromatic residues determine the phase behavior of prion-like domains. *Science* **367**, 694–699 (2020).
25. N. A. Pronina, V. E. Semenenko, Localization of membrane bound and soluble carbonic anhydrase in the *Chlorella* cell. *Fiziol. Rastenii* **31**, 241–251 (1984).
26. J. A. Raven, CO₂-concentrating mechanisms: A direct role for thylakoid lumen acidification? *Plant Cell Environ.* **20**, 147–154 (1997).
27. U. W. Goodenough, R. P. Levine, Chloroplast structure and function in *ac-20*, a mutant strain of *Chlamydomonas reinhardtii*. 3. Chloroplast ribosomes and membrane organization. *J. Cell Biol.* **44**, 547–562 (1970).
28. O. D. Caspari, M. T. Meyer, D. Tolleter, T. M. Wittkopp, N. J. Cunniffe, T. Lawson, A. R. Grossman, H. Griffiths, Pyrenoid loss in *Chlamydomonas reinhardtii* causes limitations in CO₂ supply, but not thylakoid operating efficiency. *J. Exp. Bot.* **68**, 3903–3913 (2017).

29. A. Mukherjee, C. S. Lau, C. E. Walker, A. K. Rai, C. I. Prejean, G. Yates, T. Emrich-Mills, S. G. Lemoine, D. J. Vinyard, L. C. M. Mackinder, J. V. Moroney, Thylakoid localized bestrophin-like proteins are essential for the CO₂ concentrating mechanism of *Chlamydomonas reinhardtii*. *Proc. Natl. Acad. Sci. U.S.A.* **116**, 16915–16920 (2019).
30. J. C. Villarreal, S. S. Renner, Hornwort pyrenoids, carbon-concentrating structures, evolved and were lost at least five times during the last 100 million years. *Proc. Natl. Acad. Sci. U.S.A.* **109**, 18873–18878 (2012).
31. J. A. Raven, J. Beardall, P. Sánchez-Baracaldo, The possible evolution and future of CO₂-concentrating mechanisms. *J. Exp. Bot.* **68**, 3701–3716 (2017).
32. H. Griffiths, M. T. Meyer, R. E. M. Rickaby, Overcoming adversity through diversity: Aquatic carbon concentrating mechanisms. *J. Exp. Bot.* **68**, 3689–3695 (2017).
33. M. D. Herron, J. D. Hackett, F. O. Aylward, R. E. Michod, Triassic origin and early radiation of multicellular volvocine algae. *Proc. Natl. Acad. Sci. U.S.A.* **106**, 3254–3258 (2009).
34. M. T. Meyer, T. Genkov, J. N. Skepper, J. Jouhet, M. C. Mitchell, R. J. Spreitzer, H. Griffiths, Rubisco small-subunit α -helices control pyrenoid formation in *Chlamydomonas*. *Proc. Natl. Acad. Sci. U.S.A.* **109**, 19474–19479 (2012).
35. B. D. Rae, B. M. Long, B. Förster, N. D. Nguyen, C. N. Velanis, N. Atkinson, W. Y. Hee, B. Mukherjee, G. D. Price, A. J. McCormick, Progress and challenges of engineering a biophysical CO₂-concentrating mechanism into higher plants. *J. Exp. Bot.* **68**, 3717–3737 (2017).
36. L. C. M. Mackinder, The *Chlamydomonas* CO₂-concentrating mechanism and its potential for engineering photosynthesis in plants. *New Phytol.* **217**, 54–61 (2018).
37. R. Zhang, W. Patena, U. Armbruster, S. S. Gang, S. R. Blum, M. C. Jonikas, High-throughput genotyping of green algal mutants reveals random distribution of mutagenic insertion sites and endonucleolytic cleavage of transforming DNA. *Plant Cell* **26**, 1398–1409 (2014).

38. J. Kropat, A. Hong-Hermesdorf, D. Casero, P. Ent, M. Castruita, M. Pellegrini, S. S. Merchant, D. Malasarn, A revised mineral nutrient supplement increases biomass and growth rate in *Chlamydomonas Reinhardtii*. *Plant J.* **66**, 770–780 (2011).
39. M. C. Mitchell, M. T. Meyer, H. Griffiths, Dynamics of carbon-concentrating mechanism induction and protein relocalization during the dark-to-light transition in synchronized *Chlamydomonas reinhardtii*. *Plant Physiol.* **166**, 1073–1082 (2014).
40. D. Strenkert, S. Schmollinger, S. D. Gallaher, P. A. Salomé, S. O. Purvine, C. D. Nicora, T. Mettler-Altmann, E. Soubeyrand, A. P. M. Weber, M. S. Lipton, G. J. Basset, S. S. Merchant, Multiomics resolution of molecular events during a day in the life of *Chlamydomonas*. *Proc. Natl. Acad. Sci. U.S.A.* **116**, 2374–2383 (2019).
41. R. J. Porra, W. A. Thompson, P. E. Kriedemann, Determination of accurate extinction coefficients and simultaneous equations for assaying chlorophylls a and b extracted with four different solvents: Verification of the concentration of chlorophyll standards by atomic absorption spectroscopy. *Biochim. Biophys. Acta Bioenerg.* **975**, 384–394 (1989).
42. K. Hilpert, D. F. H. Winkler, R. E. W. Hancock, Peptide arrays on cellulose support: SPOT synthesis, a time and cost efficient method for synthesis of large numbers of peptides in a parallel and addressable fashion. *Nat. Protoc.* **2**, 1333–1349 (2007).
43. J. Schindelin, I. Arganda-Carreras, E. Frise, V. Kaynig, M. Longair, T. Pietzsch, S. Preibisch, C. Rueden, S. Saalfeld, B. Schmid, J.-Y. Tinevez, D. J. White, V. Hartenstein, K. Eliceiri, P. Tomancak, A. Cardona, Fiji: An open-source platform for biological-image analysis. *Nat. Methods* **9**, 676–682 (2012).
44. One Thousand Plant Transcriptomes Initiative, One thousand plant transcriptomes and the phylogenomics of green plants. *Nature* **574**, 679–685 (2019).
45. F. Madeira, Y. M. Park, J. Lee, N. Buso, T. Gur, N. Madhusoodanan, P. Basutkar, A. R. N. Tivey, S. C. Potter, R. D. Finn, R. Lopez, The EMBL-EBI search and sequence analysis tools APIs in 2019. *Nucleic Acids Res.* **47**, W636–W641 (2019).

46. E. Gasteiger, A. Gattiker, C. Hoogland, I. Ivanyi, R. D. Appel, A. Bairoch, ExPASy: The proteomics server for in-depth protein knowledge and analysis. *Nucleic Acids Res.* **31**, 3784–3788 (2003).
47. L. A. Kelley, S. Mezulis, C. M. Yates, M. N. Wass, M. J. E. Sternberg, The Phyre2 web portal for protein modeling, prediction and analysis. *Nat. Protoc.* **10**, 845–858 (2015).
48. K. Hofmann, W. Stoffel, TMBase—A database of membrane spanning proteins segments. *Biol. Chem.* **374**, 166 (1993).
49. T. Yang, Q. Liu, B. Kloss, R. Bruni, R. C. Kalathur, Y. Guo, E. Kloppmann, B. Rost, H. M. Colecraft, W. A. Hendrickson, Structure and selectivity in bestrophin ion channels. *Science* **346**, 355–359 (2014).
50. M. Terashima, M. Specht, M. Hippler, The chloroplast proteome: A survey from the *Chlamydomonas reinhardtii* perspective with a focus on distinctive features. *Curr. Genet.* **57**, 151–168 (2011).
51. B. Mészáros, G. Erdős, Z. Dosztányi, IUPred2A: Context-dependent prediction of protein disorder as a function of redox state and protein binding. *Nucleic Acids Res.* **46**, W329–W337 (2018).
52. M. Tardif, A. Atteia, M. Specht, G. Cogne, N. Rolland, S. Brugiè, M. Hippler, M. Ferro, C. Bruley, G. Peltier, O. Vallon, L. Cournac, PredAlgo: A new subcellular localization prediction tool dedicated to green algae. *Mol. Biol. Evol.* **29**, 3625–3639 (2012).